



 **EMİRSAN**

TRUST ON THE ROADS



Emirsan Trailer is a brand of Erdemir Dis Ticaret company that is manufacturing different kind of semi trailers with its experience in international markets since 2010 from Turkey. We started our activity with producing semi trailers and extend our trailer model day by day and now we have more than 30 different trailer models according to road regulations.

*We export our semi trailers 57 countries in Europe, Africa, Sout America, Asia, Gulf, Old Soviet Union
We are a manufacturing company that lead our customers to choose best semi trailer solution for their transportation work.
We design more efficient and less contaminating systems and we are a company committed with our partners and employees.*



V TYPE CEMENT TANKER TRAILER

Trust on the roads

Technical Features

- 2 to 4 Axles
- 18 to 60 cbm Capacity
- Suitable to carry; any kind of bulk materials, cement, lime, coco3
- Domex or ST Steel body
- Deutz Diesel or Electric engine compressor
- BPW, SAF, Turkish brand Axles
- Wabco ABS and EBS brake system
- Air, mechanical or bogie type Spring Suspension
- Front Axle Lifting
- Pirelli, Bridgestone, Goodyear brand tires
- Steel or Aluminum Rims
- JOST or Turkish brand parking leg and king pin

EURO TYPE CEMENT TANKER TRAILER

Trust on the roads

Technical Features

- 2 to 4 Axles
- 18 to 60 cbm Capacity
- Suitable to carry; any kind of bulk materials, cement, lime, coco3
- Domex or ST Steel body
- Deutz Diesel or Electric engine compressor
- BPW, SAF, Turkish brand Axles
- Wabco ABS and EBS brake system
- Air, mechanical or bogie type Spring Suspension
- Front Axle Lifting
- Pirelli, Bridgestone, Goodyear brand tires
- Steel or Aluminum Rims
- JOST or Turkish brand parking leg and king pin



HALE PIPE TIPPER TRAILER

Trust on the roads

Technical Features

- 2 to 4 Axles
- 22 to 40 cbm Capacity
- Suitable to load any construction materials
- Hardox 450 or ST Steel body according to load
- Turkish brand Hydraulic Cylinder
- BPW, SAF, Turkish brand Axles
- Wabco ABS and EBS brake system
- Air , Mechanical or Bogie Type Spring Suspension
- Front Axle Lifting
- JOST or Turkish brand parking leg and king pin
- Pirelli, Bridgestone, Goodyear brand tires
- Steel or Aluminum Rims

Trust on the roads ROCK TYPE TIPPER TRAILER

Technical Features

- 2 to 4 Axles
- 22 to 45 cbm Capacity
- Suitable to load any construction materials especially big rocks
- Hardox 450 or ST Steel body according to load
- Turkish brand Hydraulic Cylinder
- BPW, SAF, Turkish brand Axles
- Wabco ABS and EBS brake system
- Air , Mechanical or Bogie Type Spring Suspension
- Front Axle Lifting
- JOST or Turkish brand parking leg and king pin
- Pirelli, Bridgestone, Goodyear brand tires
- Steel or Aluminum Rims



SCRAP TYPE TIPPER TRAILER

Trust on the roads

Technical Features

- 2 to 4 Axles
- 22 to 70 cbm Capacity
- Suitable to load any construction materials, scraps, grains
- Hardox 450 or ST Steel body according to load
- Turkish brand Hydraulic Cylinder
- BPW, SAF, Turkish brand Axles
- Wabco ABS and EBS brake system
- Air , Mechanical or Bogie Type Spring Suspension
- Front Axle Lifting
- JOST or Turkish brand parking leg and king pin
- Pirelli, Bridgestone, Goodyear brand tires
- Steel or Aluminum Rims

MULTI PURPOSE TIPPER TRAILER

Trust on the roads

Technical Features

- 2 to 4 Axles
- 22 to 45 cbm Capacity
- Suitable to load any construction materials, pallets, 20 feet containers
- Hardox 450 , Domex MC700 or ST Steel body according to load
- Turkish brand Hydraulic Cylinder
- BPW, SAF, Turkish brand Axles
- Wabco ABS and EBS brake system
- Air , Mechanical or Bogie Type Spring Suspension
- Front Axle Lifting
- JOST or Turkish brand parking leg and king pin
- Pirelli, Bridgestone, Goodyear brand tires
- Steel or Aluminum Rims



LOWBED TRAILER

Trust on the roads

Technical Features

- 2 to 10 Axles
- BPW, SAF, Turkish brand Axles
- JOST or Turkish brand parking leg and king pin
- Wabco, Knorr ABS and EBS brake system
- Pirelli, Bridgestone, Goodyear brand tires according to load
- Hydraulic or Pneumatic Ramp
- Hydraulic Gooseneck and Folding Gooseneck Option
- Hydraulic Steering Axles Option
- Hydraulic Suspension Option
- 4 to 15 meter sliding
- 2,5 to 5 meter width
- 20 to 150 tons loading

FLATBED TRAILER

Trust on the roads

Technical Features

- Wabco ABS and EBS brake system
- Steel or aluminum side doors optional
- Air, mechanical or bogie type Spring Suspension
- Front Axle Lifting
- Pirelli, Bridgestone, Goodyear brand tires
- Steel or Aluminum Rims
- 2 to 4 Axles
- Any required length; 6 to 28 meters platform length
- Suitable to carry; Dry cargo, container, big pack, beams, pipe
- Euro Type Container Locks 4 to 12 pcs
- BPW, SAF, Turkish brand Axles
- JOST or Turkish brand parking leg and king pin



LPG TANKER TRAILER

Trust on the roads

Technical Features

- 30 to 70 cbm Capacity
- 10-12 mm Body thickness
- Hydrostatic pressure test • Size Control
- Control and Certification of Materials, Radiographic control Inspection Certificate from TUV or SGS
- BPW, SAF, Turkish brand Axles
- JOST or Turkish brand parking leg and king pin

- Wabco ABS and EBS brake system
- Steel or aluminum side doors optional
- Air, mechanical or bogie type Spring Suspension
- Front Axle Lifting
- Pirelli, Bridgestone, Goodyear brand tires
- Steel or Aluminum Rims

TANKER TRAILER

Trust on the roads

Technical Features

- Wabco ABS and EBS brake system
- Steel or aluminum side doors optional
- Air, mechanical or bogie type Spring Suspension
- Front Axle Lifting
- Pirelli, Bridgestone, Goodyear brand tires
- Steel or Aluminum Rims

- 22.000 Lt to 65.000 Lt Capacity
- 4-5-6 mm Body thickness ST52 high tension steel
- 2 to 9 compartments according to size
- ADR Suitable valves and manhole covers
- BPW, SAF, Turkish brand Axles
- JOST or Turkish brand parking leg and king pin



STAINLESS STEEL TRAILER

Trust on the roads

Technical Features

- 22.000 Lt to 65.000 Lt Capacity
- 4-5-6 mm Body thickness 304, 316L, 430 stainless steel
- 2 to 9 compartments according to size
- Loading for acid, water, liquid food materials
- BPW, SAF, Turkish brand Axles
- JOST or Turkish brand parking leg and king pin
- Wabco ABS and EBS brake system
- Steel or aluminum side doors optional
- Air, mechanical or bogie type Spring Suspension
- Front Axle Lifting
- Pirelli, Bridgestone, Goodyear brand tires
- Steel or Aluminum Rims

ASPHALT TRAILER

Trust on the roads

Technical Features

- 22.000 Lt to 65.000 Lt Capacity
- 4-5-6 mm Body thickness with glasswool or rockwool coating
- Single compartment
- Optional diesel or electrical heating system
- BPW, SAF, Turkish brand Axles
- JOST or Turkish brand parking leg and king pin
- Wabco ABS and EBS brake system
- Steel or aluminum side doors optional
- Air, mechanical or bogie type Spring Suspension
- Front Axle Lifting
- Pirelli, Bridgestone, Goodyear brand tires
- Steel or Aluminum Rims

SPARE PARTS

Manhole Covers

Emergency Pressure Valves

Rubber Seals

044-364-51-74

068-122-65-16

TBS
ТРОТУАРНА ПЛИТКА
БЕТОННІ ВИРОБИ

www.emirsan.com

Aluminum Camlocks,
Air Valves

2 Head Diesel Compressor
3 Head Diesel Compressor
2 Head Electrical Compressor
3 Head Electrical Compressor

2" King Pin
3,5" King Pin
Landing Legs

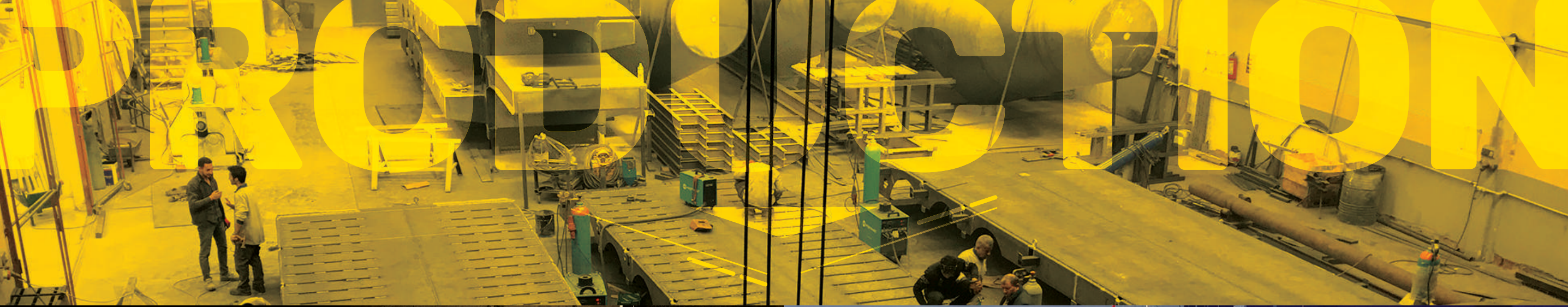
Trailer Accessories

12-14-16 Ton Axles
Air, Mechanical or Bogie Type Suspension
Z Springs, Leaf Springs

Trailer Brake Parts

Trailer Electrical Parts





emirsan.com



TRUST ON
THE ROADS

emirsan.com



STRONGER
THAN EVER

**STRONGER
THAN EVER**



Factory: Fevzi Çakmak Mah. Konsan Org. San. Böl.
10727. Sk. No. 37 Karatay/KONYA/TURKEY
Office : Binslum Plaza Livingstone Street Plot 20
Block 70 Kariakoo/Dar es Salaam/TANZANIA

Direct Line : +255 **754 413 141**

Web : www.emirsan.com
E-mail : info@emirsan.com



PUQ 0.332 400 00 55
Creative Office



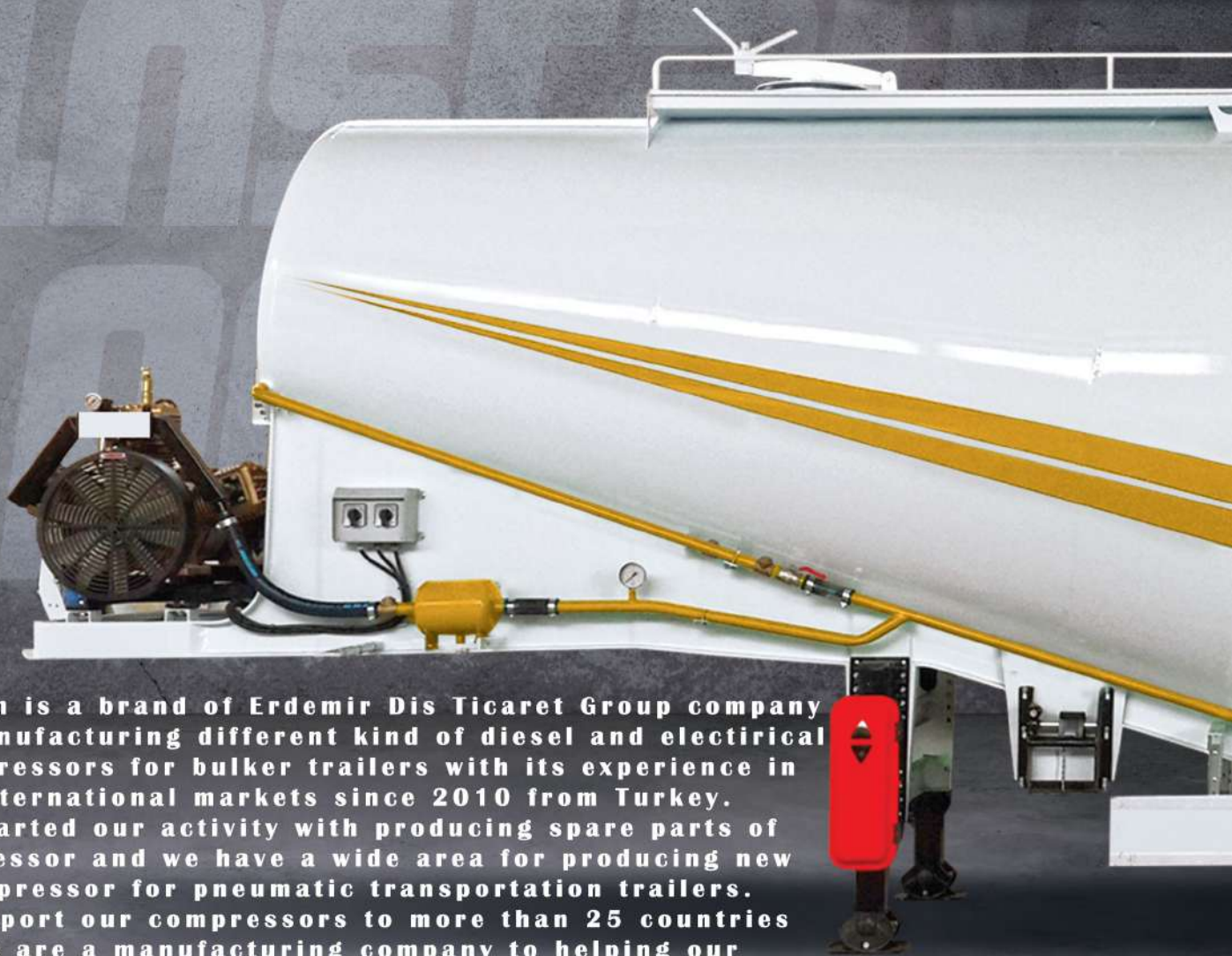
BETONSAN

COMPRESSOR

www.betonsan.com



ABOUT US



Betonsan is a brand of Erdemir Dis Ticaret Group company that manufacturing different kind of diesel and electrical compressors for bulker trailers with its experience in international markets since 2010 from Turkey.

We started our activity with producing spare parts of compressor and we have a wide area for producing new compressor for pneumatic transportation trailers.

We export our compressors to more than 25 countries

We are a manufacturing company to helping our customer choose the best solution for compressor for their bulker trailers.

We design more efficient and less contaminating systems and we are a company committed with our partners.

Emirsan also has line of production semi trailers and semi trailer parts from Turkey

BTS-10200D

Yeni Dizel Motorlu

Compressor with Brand New Diesel Engine / ضاغط هواء 2 رأس يعمل بمحرك ديزل جديد



BETONSAN
COMPRESSOR



BTS-10200D

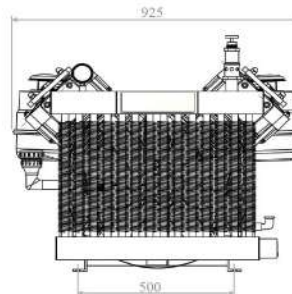
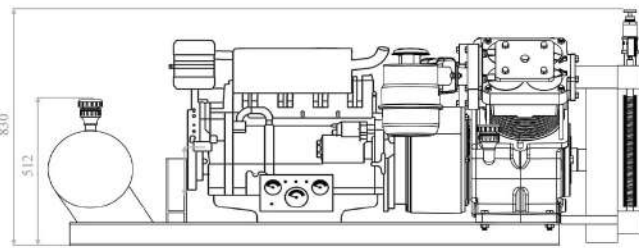
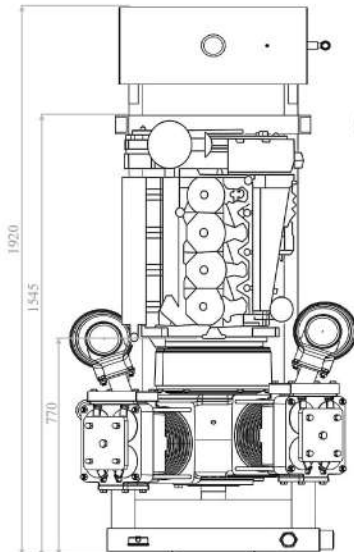
Yeni Dizel
New Diesel



Yeni Dizel Motorlu / Compressor with Brand New Diesel Engine / ضاغط هواء 2 رأس يعمل بمحرك ديزل جديد

KAPASİTE / CAPACITY	10200 LT / DK - MINUTE
BASINÇ / WORKING PRESSURE	2,5 - 3 BAR
MOTOR / ENGINE	BEINEI F4L912 DİZEL / DIESEL
PİSTON ÇAPI / PISTON DIAMETER	220 MM
PİSTON ADETİ / PISTON QTY	2 ADET / QTY
PİSTON STROK / PISTON STROKE	90 MM
SOĞUTMA ŞEKLİ / COOLING TYPE	HAVA SOĞUTMALI / AIR COOLER
BRÜT AĞIRLIĞI / TOTAL WEIGHT	840 KG
BOYUTLARI / DIMENSIONS	1918x923x1010mm

10200 لتر / دقيقة	كمية خروج الهواء
3-2.5 بار	ضغط الهواء اسثناء العمل
Beinei / حصان / 80 - 1500 ديزل / لفة / دقيقة	المحرك
عدد 2 - 220 ملليمتر	عدد وقطر المكبس
90 ملليمتر	شوط مكبس المحرك
تبريد هوا	نوع التبريد



BTS-10200E

Elektrikli Kompresör

Electric Compressor / ضاغط هواء 2 رأس متحرك يعمل بالكهرباء



BETONSAN
COMPRESSOR



www.betonsan.com

BTS-10200E

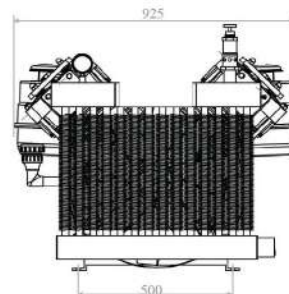
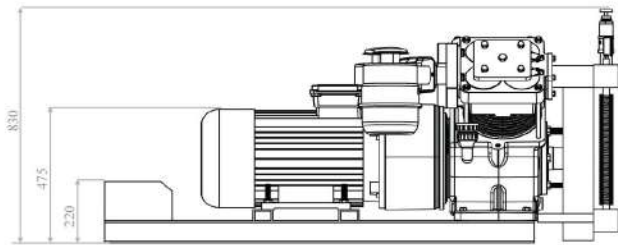
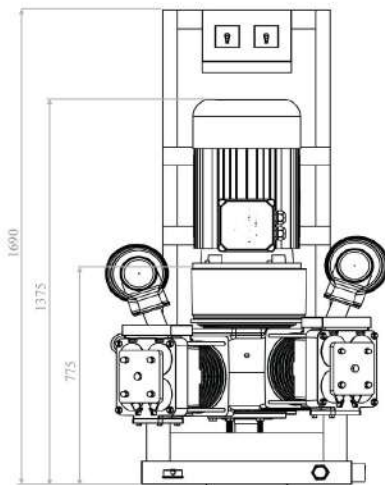
Elektrik
Electric



Elektrikli Kompresör / Electric Compressor / ضاغط هواء 2 رأس متحرك يعمل بالكهرباء

KAPASİTE / CAPACITY	10200 LT / DK - MINUTE
BASINÇ / WORKING PRESSURE	2,5 - 3 BAR
MOTOR / ENGINE	22KW (30HP) ELEKTRİKLİ / ELECTRIC DYNAMO
PİSTON ÇAPI / PISTON DIAMETER	220MM
PİSTON ADETİ / PISTON QTY	2 ADET / 2 QTY
PİSTON STROK / PISTON STROKE	90MM
SOĞUTMA ŞEKLİ / COOLING TYPE	HAVA SOĞUTMALI / AIR COOLER
BRÜT AĞIRLIĞI / TOTAL WEIGHT	540 KG
BOYUTLARI / DIMENSIONS	1687x923x824mm

10200 لتر / دقيقة	كمية خروج الهواء
3-2.5 بار	ضغط الهواء اسثناء العمل
محرك كهربائي - 30 حصان 22Kw - 1500 لفة / دقيقة	المحرك
عدد 2 - 220 ملليمتر	عدد وقطر المكبس
90 ملليمتر	شوط مكبس المحرك
تبريد هوا	نوع التبريد



BTS-10200R

Revizyonlu Dizel Motorlu Kompresör

Compressor With Renewed Diesel Engine / ضاغط هواء 2 رأس يعمل بمحرك ديزل مجدد



BETONSAN
COMPRESSOR



BTS-10200R

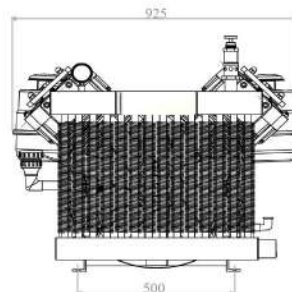
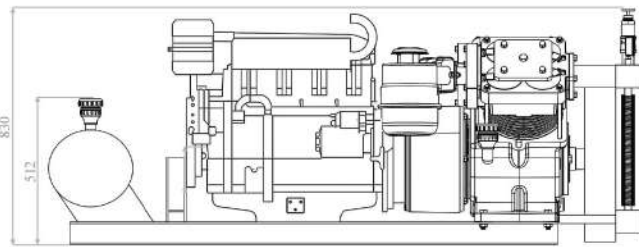
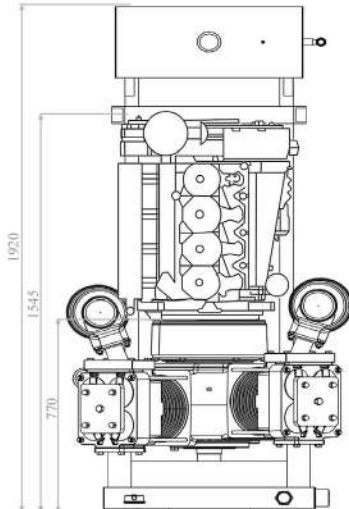
Revizyonlu
With Renewed



Revizyonlu Dizel Motorlu Kompresör / Compressor With Renewed Diesel Engine / ضاغط هواء رأس يعمل بمحرك ديزل مجدد

KAPASİTE / CAPACITY	10200 LT - LITER / DK - MINUTE
BASINÇ / WORKING PRESSURE	2,5 - 3 BAR
MOTOR / ENGINE	DEUTZ F4L912 DİZEL (REVİZYONLU) / RENEWED
PİSTON ÇAPI / PISTON DIAMETER	220MM
PİSTON ADETİ / PISTON QTY	2 ADET /QTY
PİSTON STROK / PISTON STROKE	90MM
SOĞUTMA ŞEKLİ / COOLING TYPE	HAVA SOĞUTMALI / AIR COOLER
BRÜT AĞIRLIĞI / TOTAL WEIGHT	840 KG
BOYUTLARI / DIMENSIONS	1800x1000x940mm

10200 لتر / دقيقة	كمية خروج الهواء
3-2.5 بار	ضغط الهواء اسثناء العمل
Deutz / حصان / 1500 لفة / دقيقة - 80	المحرك
عدد 2 - 220 ملليمتر	عدد وقطر المكبس
90 ملليمتر	شوط مكبس المحرك
تبريد هوا	نوع التبريد



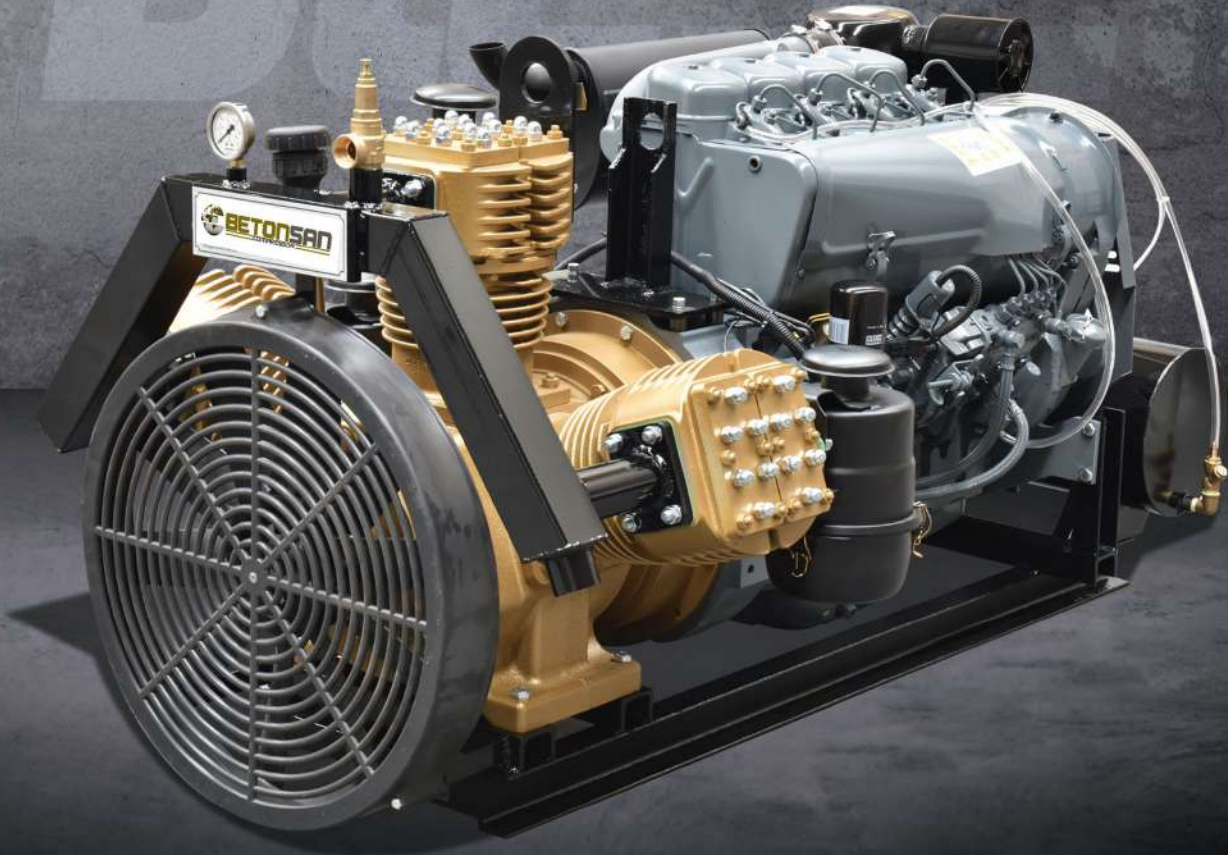
BTS-7200D

Yeni Dizel Motorlu

Compressor With Brand New Diesel Engine / ضاغط هواء 3 رأس يعمل بمحرك ديزل جديد



BETONSAN
COMPRESSOR



www.betonsan.com

BTS-7200D

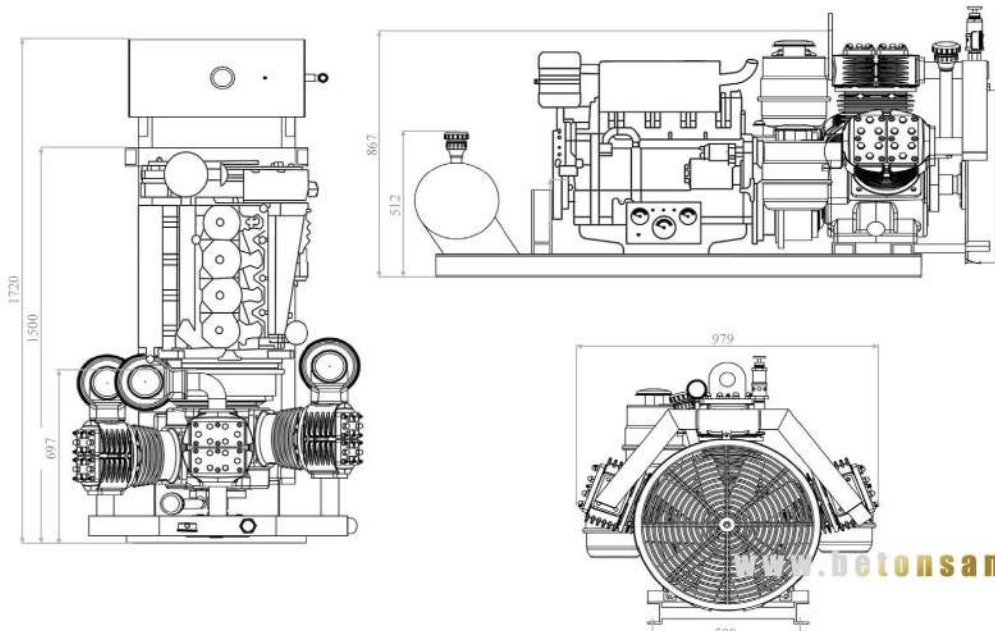
Yeni Dizel
New Diesel



Yeni Dizel Motorlu / Compressor with Brand New Diesel Engine / ضاغط هواء 3 رأس يعمل بمحرك ديزل جديد

KAPASİTE / CAPACITY	7200 LT / DK - MINUTE
BASINÇ / WORKING PRESSURE	2,5 - 3 BAR
MOTOR / ENGINE	BEINEI F4L912 DİZEL / DIESEL
PİSTON ÇAPI / PISTON DIAMETER	160MM
PİSTON ADETİ / PISTON QTY	3 ADET / QTY
PİSTON STROK / PISTON STROKE	80MM
SOĞUTMA ŞEKLİ / COOLING TYPE	HAVA SOĞUTMALI / AIR COOLER
BRÜT AĞIRLIĞI / TOTAL WEIGHT	740 KG
BOYUTLARI / DIMENSIONS	1800x1000x940mm

7200 لتر / دقيقة	كمية خروج الهواء
2.5-3 بار	ضغط الهواء اسثناء العمل
Beinei / حصان 80 / 1500 ديزل / لفة / دقيقة -	المحرك
عدد 3 - 160 ملليمتر	عدد وقطر المكبس
80 ملليمتر	شوط مكبس المحرك
تبريد هوا	نوع التبريد



BTS-7200E

Elektrikli Kompresör

Electric Compressor / ضاغط هواء 3 رأس متحرك يعمل بالكهرباء



BETONSAN
COMPRESSOR



BTS-7200E

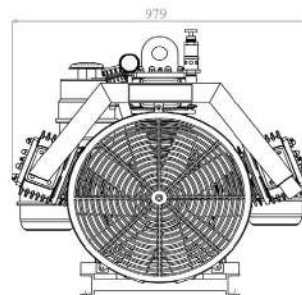
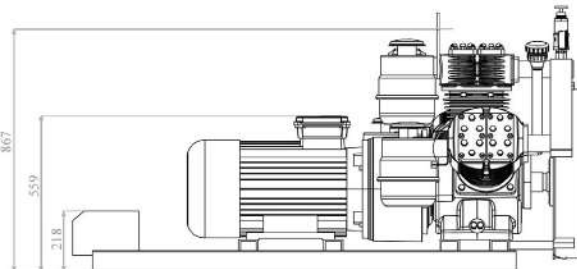
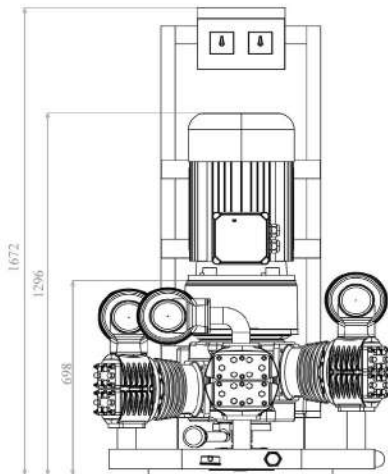
Elektrik
Electric



Elektrikli Kompresör / Electric Compressor / ضاغط هواء 3 رأس متحرك يعمل بكهرباء

KAPASİTE / CAPACITY	7200 LT/DK - MINUTE
BASINÇ / WORKING PRESSURE	2,5 - 3 BAR
MOTOR / ENGINE	18,5KW (25HP) ELEKTRİKLİ / ELECTRIC DYNAMO
PİSTON ÇAPI / PISTON DIAMETER	160MM
PİSTON ADETİ / PISTON QTY	3 ADET / QTY
PİSTON STROK / PISTON STROKE	80MM
SOĞUTMA ŞEKLİ / COOLING TYPE	HAVA SOĞUTMALI / AIR COOLER
BRÜT AĞIRLIĞI / TOTAL WEIGHT	440 KG
BOYUTLARI / DIMENSIONS	1500xx1000x940mm

7200 لتر / دقيقة	كمية خروج الهواء
3-2.5 بار	ضغط الهواء اسثناء العمل
محرك كهربائي - 25 حصان 18,5 Kw - 1500 لفة / دقيقة	المحرك
عدد 3 - 160 ملليمتر	عدد وقطر المكبس
80 ملليمتر	شوط مكبس المحرك
تبريد هواء	نوع التبريد



Spare Parts / قطع غيار



SPARE PARTS-10200

Yedek Parça
Spare Parts



BETONSAN
COMPRESSOR



01 | KARTEL / OIL HOUSING / سئلندر 2 راس
G2202001



02 | KRANK / CRANK SHAFT / عمود كرنك
G2202002



03 | PINSTON KOLU / ONNECTING ROD / ذراع بستم
G2202003



04 | INA NKIS70 RULMAN / BEARING NKIS70 / 70 رومان ذراع
G2202004



05 | INA RNA 6905 XL / BEARING INA RNA 6905 XL /
رومان ذراع ين بستم
G2202005



06 | KRANK AĞIRLIĞI / CRANK SHAFT BALANCE PLATE /
ميزانیه عمود كرنك
G2202006



07 | ARKA KAPAK / REAR COVER / الغطاء الخلفي
G2202007



08 | ARKA KAPAK SEGMANI / REAR COVER LOCK RING /
تلبه رومان عمود كرنك خلفي
G2202008



09 | ARKA KAPAK RULMANI / REAR COVER BEARING /
رومان عمود كرنك خلفي
G2202009



10 | ÖN KAPAK / FRONT COVER / الغطاء الامامي
G2202010



11 | ÖN KAPAK SEGMANI / FRONT COVER LOCK RING /
تلبه رومان عمود كرنك امامي
G2202011



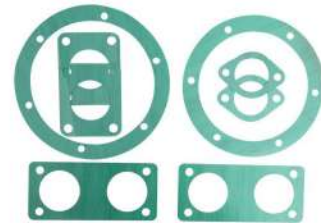
12 | ÖN KAPAK RULMANI / FRONT COVER BEARING /
رومان عمود كرنك امامي
G2202012



13 | YAĞ KEÇESİ / OIL SEAL / صوفه زيت 2 رأس
G2202013



14 | KEÇE YATAĞI / SEAL HOUSING / جلبه مانع زيت
G2202014



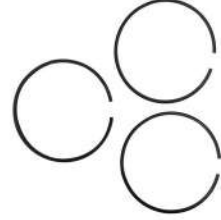
15 | CONTA TAKIMI / GASKET KIT / طلمم جوان كامل 2 رأس
G2202015



16 | PİSTON / PISTON / پیستون 2 رأس /
G2202016



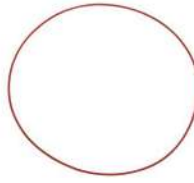
17 | PİSTON PİMİ / POSTION PIN / بین پیستون 2 رأس /
G2202017



18 | PİSTON SEGMAN / PISTON RING / طقم شنیر 2 رأس /
G2202018



19 | GÖMLEK ALT LASTİK CONTA / SLEEVE LOWER O'RING /
ریل قمیص تحت 2 رأس /
G2202019



20 | GÖMLEK ÜST LASTİK CONTA / SLEEVE UPPER O'RING /
ریل قمیص فوق 2 رأس /
G2202020



21 | GÖMLEK / SLEEVE / قمیص 2 رأس /
G2202021



22 | 275mm SAPLAMA / 275mm BOLT / مسماز هد 2 رأس /
G2202022



23 | HAVA EMME BLOĞU / AIR INTAKE BLOCK / هد 2 رأس /
G2202023



24 | KLAPE BAKIR PULU / FLAP COPPER WACHER /
ورده نحاس بلف 2 رأس /
G2202024



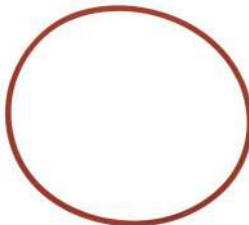
25 | HAVA EMME KLEPE / SUCTION VALVE /
بلف شفط 2 رأس /
G2202025



26 | HAVA BASMA KLEPE / PRESSURE VALVE /
بلف ضغط 2 رأس /
G2202026



27 | KAFES / VALVE CAP / قفیز قصیر شفط 2 رأس /
G2202027



28 | KAFES LASTİK CONTASI / VALVE CAP O'RING /
ریل قفیز 2 رأس /
G2202028



29 | KAFES BRKETİ / VALVE CAP BRACKET /
غطاء هد 2 رأس /
G2202029



30 | KAMA / KRANK SAFETY PIN / خابور عمود کرنک /
G2202030

SPARE PARTS-10200

Yedek Parça
Spare Parts



31 | KONİK VOLANT / FLYWHEEL / حداف 2 راس
G2202031



32 | KAPLIN PİMİ / COUPLING PIN / مسمار بن حداف
G2202032



33 | PİM LASTİĞİ / RUBBER BUSH / ريل مسمار بن حداف
G2202033



34 | KRANK SOMUNU / CRANKSHAFT NUT / صاومة كرنك 2 راس
G2202034



35 | KAPLIN MUHAFAZA / COUPLING HOUSING / غطاء حداف محرك ديزل
G2202035



36 | YAĞ GÖSTERGE CUBUĞU / OIL LEVELLER / عيار أو مقاس زيت ضاغط هواء
G2202036



37 | RADYATÖR / RADIATOR / تبريد (الردفتر)
G2202037



38 | 10 -12 mm SAPLAMA / 10-12mm BOLT / طقم البراغي
G2202038



39 | FAN / FAN / مروحة
G2202039



40 | MANOMETRE / PRESSURE GAUGE / ساعة قياس ضغط
G2202040



41 | EMNİYET VANTILI / SAFETY VALVE / بلف أمان
G2202041



42 | YAĞ DEPO KAPAĞI / OIL TANK CAP / غطاء الزيت
G2202042



43 | DİZEL DEPO KAPAĞI / DIESEL TANK CAP / غطاء الديزل
G2202043



44 | ELK. MOT. KAPL. / ELECTRIC MOTOR COUPLING / شفة المحرك الكهربائي
G2202044



45 | ELK. MOT. KAP. MUH. / ELECTRIC MOTOR COUPLING HOUSING / وافي تمثيق المحرك الكهربائي
G2202045



BETONSAN
COMPRESSOR

SPARE PARTS-10200

Yedek Parça
Spare Parts



47 | FİLTRE MON. KUTUSU / FILTER BRACKET ASSEMBLY
قاعدة فلتير هواء
G2202047



48 | KOMPRESÖR HAVA FİLTRESİ /
COMPRESSOR AIR FILTER / فلتير هوا كمپرسر
G2202048



49 | MOTOR HAVA FİLTRESİ / ENGINE AIR FILTER /
فلتر هوا المحرك الديزل
G2202049



50 | YAKIT DEPOSU / FUEL TANK / خزان الوقود
G2202050



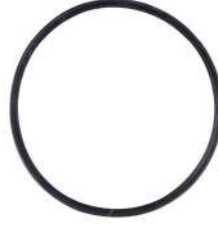
51 | 4FL 912 EGZ0Z / 4FL 912 EXHAUST / شكمين / مقطر
G2202051



52 | PİSLİK TUTUCU / LINE FILTER / مصفاة
G2202052



53 | MOTOR VOLANTI / ENGINE FLYWHEEL
حداف محرك ديزل
G2202053



54 | FİLTRE LASTİĞİ / FILTER RUBBER
ربل فلتير هواء
G2202054



55 | KOMPRESÖR TAKOZU / COMPRESSOR MOUNTING
ربل قاعدة ضاغط هواء
G2202055



56 | DİZEL DEPO TAKOZU / DIESEL TANK MOUNTING
ربل قاعدة خزان ديزل
G2202056

SPARE PARTS-7200

Spare Parts / قطع غيار



BETONSAN
COMPRESSOR



www.betonsan.com

SPARE PARTS-7200

Yedek Parça
Spare Parts



01 | KARTEL / OIL HOUSING / سلندر 3 راس
G1603001



02 | KRANK / CRANK SHAFT / عمود كرنك
G1603002



03 | KRANK AĞIRLIĞI / CRANK SHAFT BALANCE PLATE /
ميزانیه عمود كرنك
G1603003



04 | KRANK KAMASI / KRANK SAFETY PIN /
خابور عمود كرنك
G1603004



05 | PINSTON KOLU / CONNECTING ROD / ذراع بستم
G2202005



06 | (INA NKIS 60) PISTON KOLU RULMAN / BEARING NKIS60
رومان ذراع 60
G1603006



07 | ARKA KAPAK / REAR COVER / الغطاء الخلفي
G1603007



08 | ARKA KAPAK SEGMANI / REAR COVER LOCK RING /
تليه رومان عمود كرنك خلفي
G1603008



09 | ARKA KAPAK RULMANI / REAR COVER BEARING /
رومان عمود كرنك خلفي
G1603009



10 | ÖN KAPAK / FRONT COVER / الغطاء الامامي
G1603010



11 | ÖN KAPAK SEGMANI / FRONT COVER LOCK RING /
تليه رومان عمود كرنك امامي
G1603011



12 | ÖN KAPAK RULMANI / FRONT COVER BEARING /
رومان عمود كرنك امامي
G1603012



13 | YAĞ KEÇESİ TAKIM / OIL SEAL KIT /
صوفة زيت 3 رأس
G1603013



14 | CONTA TAKIMI / GASKET KIT /
طقم جوان كامل 3 رأس
G1603014



15 | 160MM PISTON / 160MM PISTON / بستم 3 رأس
G2202015



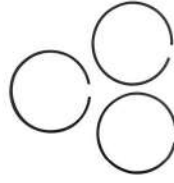
BETONSAN
COMPRESSOR

SPARE PARTS-7200

Yedek Parça
Spare Parts



16 | PISTON PİM / PISTON PIN / بن بستم 3 راس
G1603016



17 | PISTON SEGMAN / PISTON RING / حلقم شنبير 3 راس
G1603017



18 | GÖMLEK / SLEEVE / قميص 3 راس
G1602018



19 | HAVA EMME BLOĞU / AIR INTAKE BLOCK / هد 3 راس
G1603019



20 | KLAPE BAKIR PULU / FLAP COPPER WACHER / ورده نحاس بلف 3 راس
G1603020



21 | EMME KLEPE / SUCTION VALVE / بلف شفط 3 راس
G1603021



22 | BASMA KLEPE / PRESSURE VALVE / بلف ضغط 3 راس
G1603022



23 | KAFES / VALVE CAP BRACKET / قفیز قصیر شفط 3 راس
G1603023



24 | KONİK VOLAN / FLYWHEEL / حداف 3 راس
G1603024



25 | MOTOR VOLANTI / ENGINE FLYWHEEL / حداف محرك دیزل
G1603025



26 | KAPLIN MUHAFAZA / COUPLING HOUSING / غطاء حداف محرك دیزل
G1603026



27 | KEÇE YATAKLARI / SEAL HOUSING / جلبه مانع زيت
G1603027



28 | KAPLIN PİMİ / COUPLING PIN / مسمار بن حداف
G1603028



29 | KAPLIN PİMİ LASTİĞİ / COUPLING PIN RUBBER / ریل مسمار بن حداف
G1603029



30 | KRANK SOMUNU / CRANK NUT / صاومة كرنك 3 راس
G1603030



32 | YAĞ GÖSTERGE ÇUBUĞU / OIL LEVELLER /
عیار او مقاس زيت ضابط هواء
G1603032



33 | FAN MUHAFAZA / FAN COVER /
واقي المحرك الكهربائي
G1603033



34 | FAN / FAN / مروحة
G1603034



35 | MANOMETRE / PRESSURE GAUGE / ساعة قياس ضغط
G1603035



36 | EMNİYET VANTİLİ / SAFETY VALVE / بلف أمان
G2202036



37 | YAĞ KAPAĞI / OIL CAP / غطاء الزيت
G1603037



38 | DİZEL DEPO KAPAĞI / DIESEL TANK CAP / غطاء الديزل
G1603038



38 | ELEKTRİK PANEL / ELECTRIC PANEL / لوحة المحرك الكهربائي
G1603043



39 | EL. MOT. KAPLINI / ELEC. MOT. COUPLING / شفة المحرك الكهربائي
G1603039



40 | ELK. MOT. KAPLIN MUH. /
ELEC. MOT. COUP.G HOUSING / واقي تمشيق المحرك الكهربائي
G1603040



41 | RADYATOR / RADIATOR / تبريد (الرديتر)
G1603041



42 | FILTER / COMPRESSOR AIR FILTER /
فلتر هوا كمپرسر
G1603042



44 | YILDIZ ÜÇGEN ŞALTERİ / STAR TRIANGLE SWITCH /
توصيل نجمة وثلاثية الأوجه
G1603044



45 | YÖN ŞALTERİ / DIRECTION SWITCH / محولة الاتجاه
G1603045



46 | KAFES BRAKETİ / VALVE CAP BRACKET /
غطاء هد 3 راس
G1603046



BETONSAN

COMPRESSOR

Adress : Büyükkayacık OSB Mah.
502. Sok NO: 8 Selcuklu
KONYA-TURKEY

Dir Line: +(90)554 500 50 00
+(90)535 822 55 52

Phone : +90 332 342 2331

Fax : +90 332 346 5959

www.betonsan.com

info@betonsan.com

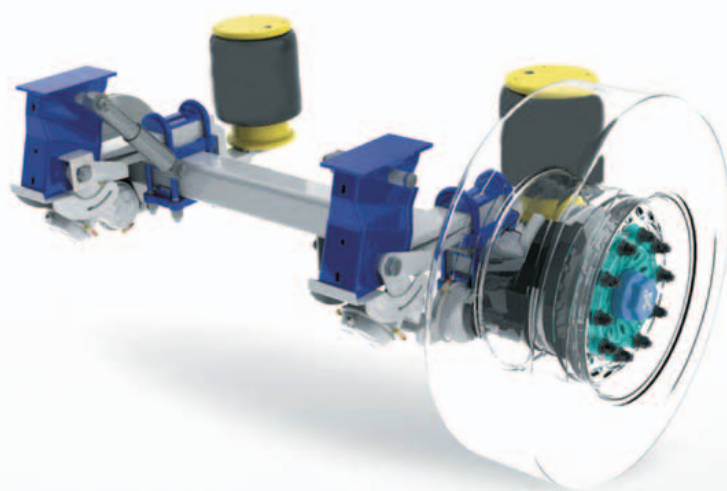


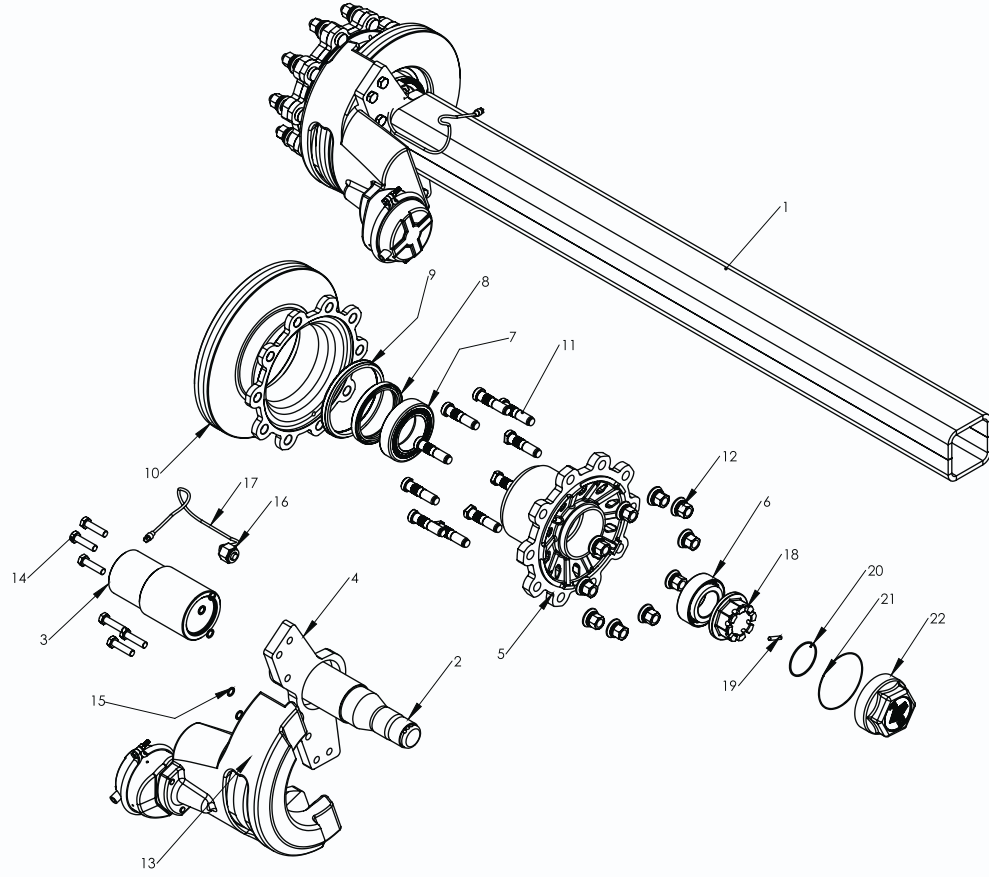
EMİRSAN

www.emirsan.com



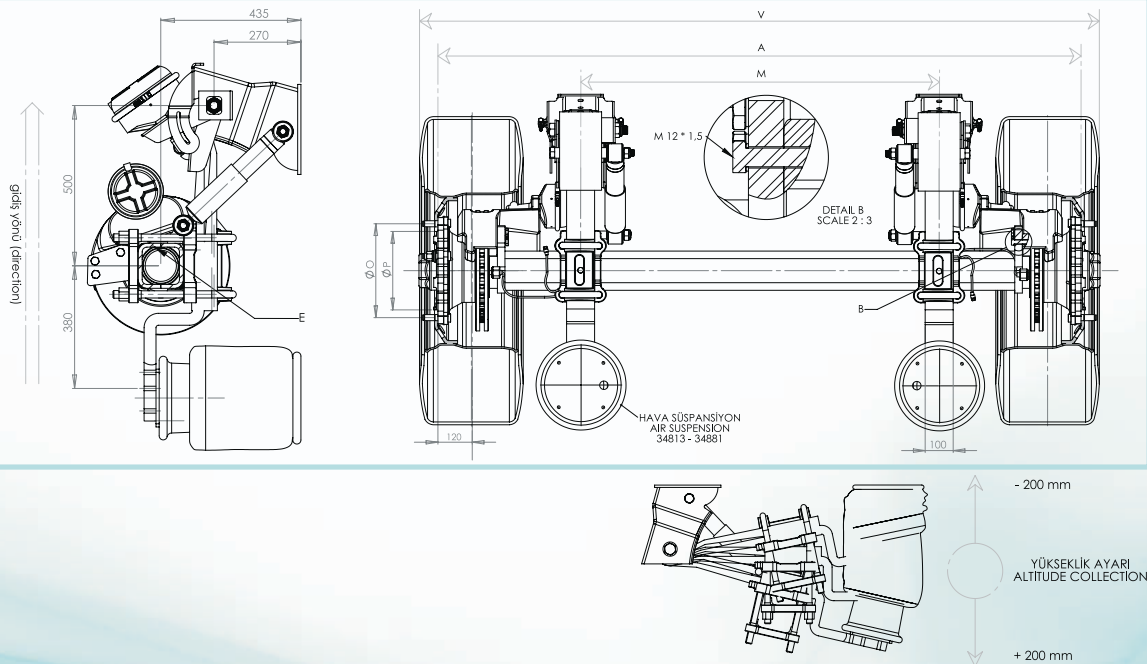
DINGIL | AXLE





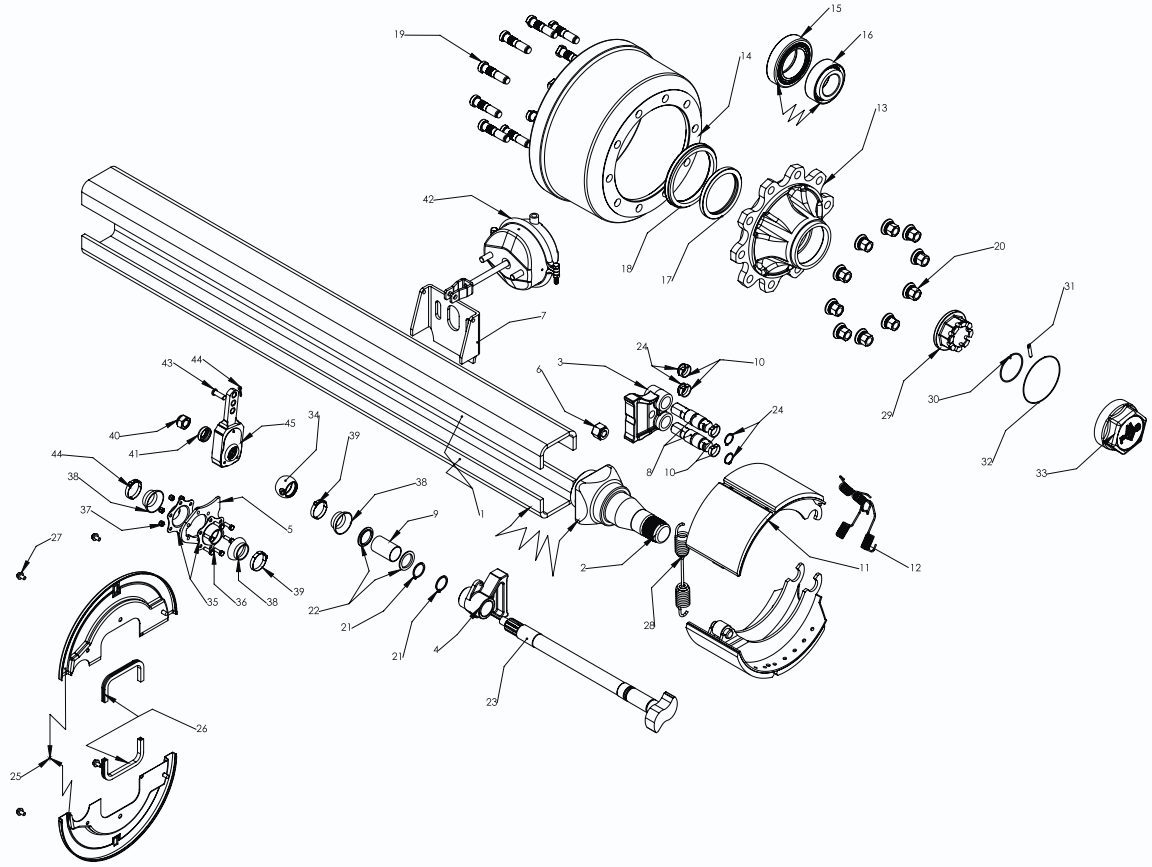
PARÇA ADI	MONTAJ NO	ADET
ARA KOVAN	1	1
AKİS	2	2
ARA KOVAN BORUSU	3	2
ABS SENSÖR BAĞLANTI SOMUNU	16	2
ABS SENSÖR	17	2
PORYA	5	2
DİSK	10	2
KALİPER-FREN KÖRÜĞÜ MONTAJI	13	2
KALİPER BAĞLANTISI	4	2
CİVATA	14	12
PUL	15	12
ARKA RULMAN	7	2
ÖN RULMAN	6	2
YAĞ KEÇESİ	8	2
ABS SENSÖR DİŞLİSİ	9	2
BÜYÜK M22*1,5	11	20
BÜYÜK SOMUNU M22*1,5	12	20
AKİS SOMUNU	18	2
AKİS SOMUN SEGMANI	20	2
AKİS SOMUN SEGMAN PİMİ	19	2
PORYA KAPAĞI YAĞ LASTİĞİ	21	2
PORYA KAPAĞI	22	2

PART NAME	ASSEM.NU.	ITEM
AXLE PIPE	1	1
AXLE	2	2
AXLE PIPE	3	2
ABS CONNECT NUT	16	2
ABS SENSOR	17	2
PORYA	5	2
DISC	10	2
BRAKE KIT	13	2
BRAKE KIT IRON SHEET	4	2
BOLT	14	12
STAMP	15	12
BACK BEARING	7	2
FRONT BEARING	6	2
OIL SEAL	8	2
ABS SENSOR GEAR	9	2
RIM BOLT M22*1,5	11	20
WHEEL NUT M22*1,5	12	20
AXLE NUT	18	2
AXLE NUT RING	20	2
PIN	19	2
COVER OIL SEAL	21	2
HUB COVER	22	2



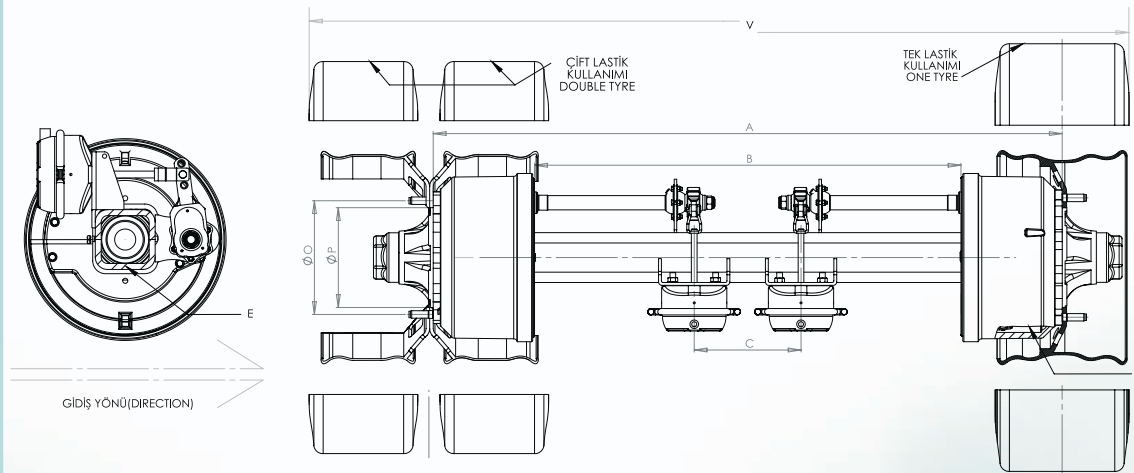
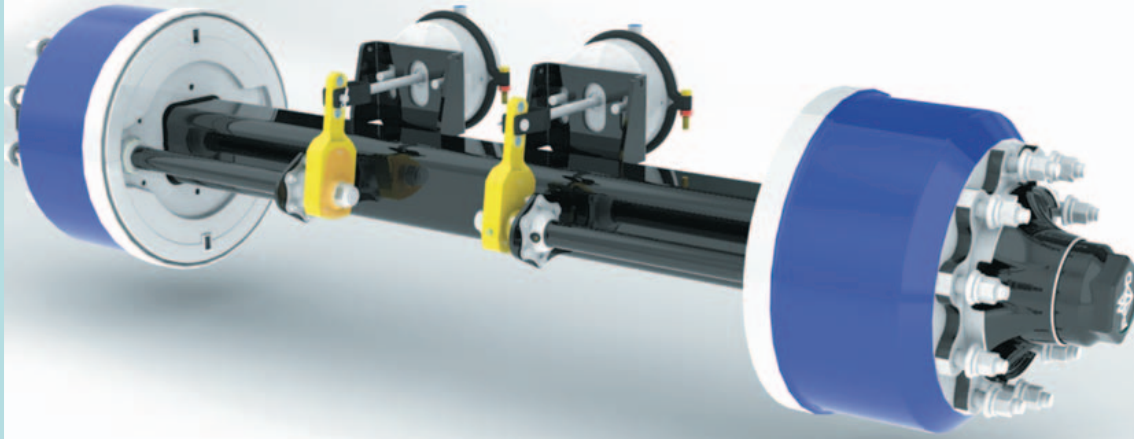
DİNGİL ADI AXLE NAME	KODU CODE	İZ MESAFESİ (A)	MAKAS MERKEZİ (M)	ARA KOVAN (E)	BİÇİMLİK MERKEZİ (O)	JANT ÇAPİ (P)	RULMAN BEARING	AĞIRLIK WEIGHT	DIŞ GÜVENLİK (V)
HAVA SÜSPANSİYON DİSK DİNGİL AIR SUSPENSION DISC BRAKE AXLE	PD DSP12	2290	1280	140*12	Ø335	Ø280	33213-218248	560 kg	2430

Ölçülendirme mm cinsindendir. / Dimension mm
 "A" değeri isteğe göre ayarlanabilir / "A" value is adjustable



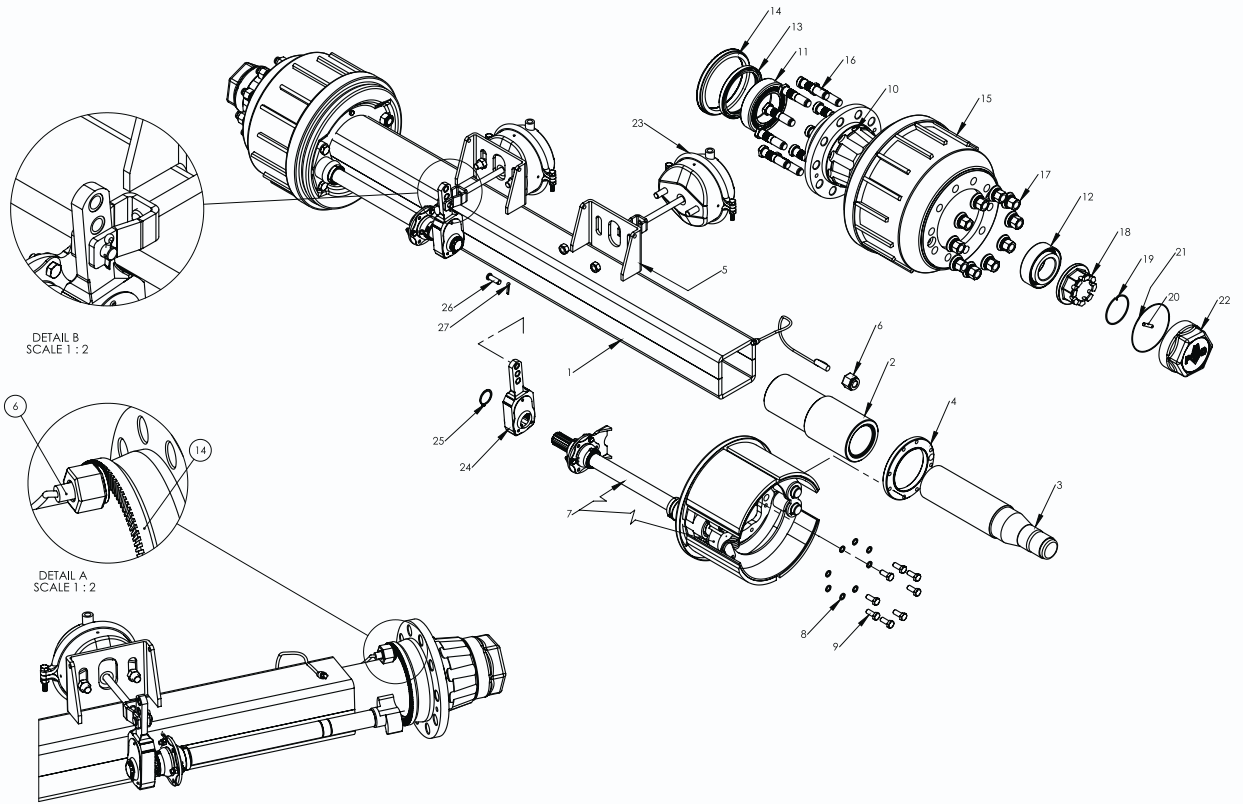
PARÇA ADI / PART NAME	MONTAJNO PART NAME	ADET
ARA KOVAN MONTAJI	AXLE PIPE ASSEMBLY	A
ARA KOVAN	AXLE PIPE	1
AKİS	AXLE	2
FREN PABUÇ YATAĞI (ÇİFT DELİK)	BRAKE TABLE (DOUBLE HOLE)	3
S-KAM MİLİ YATAĞI (TEK DELİK)	SKAM SHAFT TABLE (ONE HOLE)	4
S-KAM MİLİ YATAK BAĞSACI	S-KAM SHAFT IRON SHEET	5
ABS SENSÖR BAĞSOMUNU	SENSOR BEARING	6
FREN KÖRÜK BAĞLANTISI	BELLOW IRON SHEET	7
KAMPANA-PORYA MONTAJI	DRUM-HUB ASSEMBLY	B
ÇİFT DELİK FREN PABUÇ YATAK PİMİ	BRAKE TABLE PIN	8
S-KAM MİLİ YATAK BURCU	S-KAM SHAFT BUSH	9
FREN AYI PERNO C KLİPSİ	FREN AYI PERNO C KLİPSİ	10
FREN PABUCU-BALATA KİTİ	BRAKE CIT	11
PABUÇ SIKTIRMA SIRT YAYI	BRAKE CIT SPRING	12
PORYA	BHUB	13
KAMPANA	DRUM	14
ARKA RULMAN	BACK BEARING	15
ÖN RULMAN	FRONT BEARING	16
YAĞ KEÇESİ	OIL SEAL	17
ABS SENSÖR DİŞLİSİ	SENSOR GEAR	18
BİJON M22*1,5	WHEEL NUT M22*1,5	19
BİJON SOMUNU M22*1,5	BOLT M22*1,5	20
38 LİK SEGMAN	38 mm RING	21
S-KAM MİLİ SIVAMA PULU	S-KAM SHAFT STAMP	22

PARÇA ADI / PART NAME	MONTAJNO PART NAME	ADET
S-KAM MİLİ	S-KAM SHAFT	23
28 LİK SEGMAN	28 mm RING	24
TOZ SACI	DRUM IRON SHEET	25
TOZ SACI LASTİĞİ	RUBBER (DRUM IRON SHEET)	26
TOZ SACI CIVATASI M9x15	NUT M9x15	27
PABUÇ SIKTIRMA YAYI	BRAKE CIT SPRING	28
AKİS SOMUNU	AXLE BOLT	29
AKİS SOMUN SEGMANI	AXLE BOLT RING	30
AKİS SOMUN SEGMAN PİMİ	AXLE PIN	31
PORYA KAPAĞI YAĞ LASTİĞİ	HUB COVER OIL RUBBER	32
PORYA KAPAĞI	HUB COVER	33
S-KAM YAT-FREN KÖR. MON.	SKAM SHAFT-BRAKE ASS.	C
S-KAM YAT.KÜRELİ BURCU	S-KAM BEARING BUSH	34
S-KAM MİLİ YATKÜR BURÇ PULU	SKAM SHAFT BUSH STAMP	35
S-KAM YATAĞI Civata M8*32	NUT M8*32	36
S-KAM MİLİ YAT.SOMUN M8*7	BOLT M8*7	37
S-KAM MİLİ TOZ LASTİĞİ	S-KAM SHAFT RUBBER	38
S-KAM MİLİ KELEPÇE	SKAM SHAFT BEAR CLAMP	39
S-KAM MİLİ SOMUNU M22*16	S-KAM SHAFT NUT M22*16	40
S-KAM MİLİ GÖMMELİ PULU	S-KAM SHAFT STAMP	41
KÖRÜK	BELLOW	42
PİM	PIN	43
CİRCİR	SLACK ADJUSTER	45
KUPİLYA	PIN	44



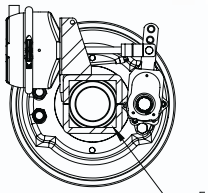
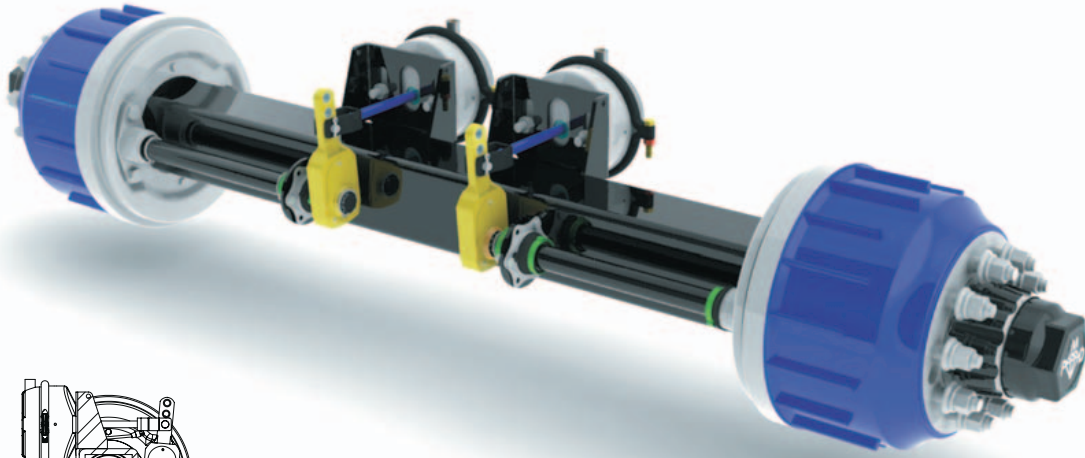
DİNGİL ADI AXLE NAME	KODU CODE	İZ MESAFESİ (A)	TOZ SACI MESAFESİ (B)	KÖRÜK MESAFESİ (C)	ARA KOVAN (E)	KAMPA DRUM (F)	BIJON EKSENİ (O)	JANT ÇAPİ (P)	BALATA BRAKE	RULMAN BEARING	AĞIRLIK WEIGHT	DİŞ GENİŞLİK (V)
9TON PİLOT TEK LASTİK	PD P09	2080	1560	570	□120*12	PD-2021	Ø335	Ø280	Ø420*180	33213 - 218248	350 kg	2470
12TON PİLOT TEK LASTİK	PD P12	2080	1520	570	□140*14	PD-2045	Ø335	Ø280	Ø420*200	33213 - 218248	360 kg	2470
12TON ÇİFT LASTİK	PD L12	1840	1280	335	□140*14	PD-2045	Ø335	Ø280	Ø420*200	33213 - 218248	400 kg	2490
14TON ÇİFT LASTİK	PD L14	1840	1280	335	□140*14	PD-2045	Ø335	Ø280	Ø420*200	33019 - 33215	400 kg	2490
16TON ÇİFT LASTİK	PD L16	1840	1280	335	□140*14	PD-2045	Ø335	Ø280	Ø420*220	32314 - 32222	450 kg	2490

Ölçülendirme mm cinsindendir. / Dimension mm
 "A" değeri isteğe göre ayarlanabilir / "A" value is adjustable

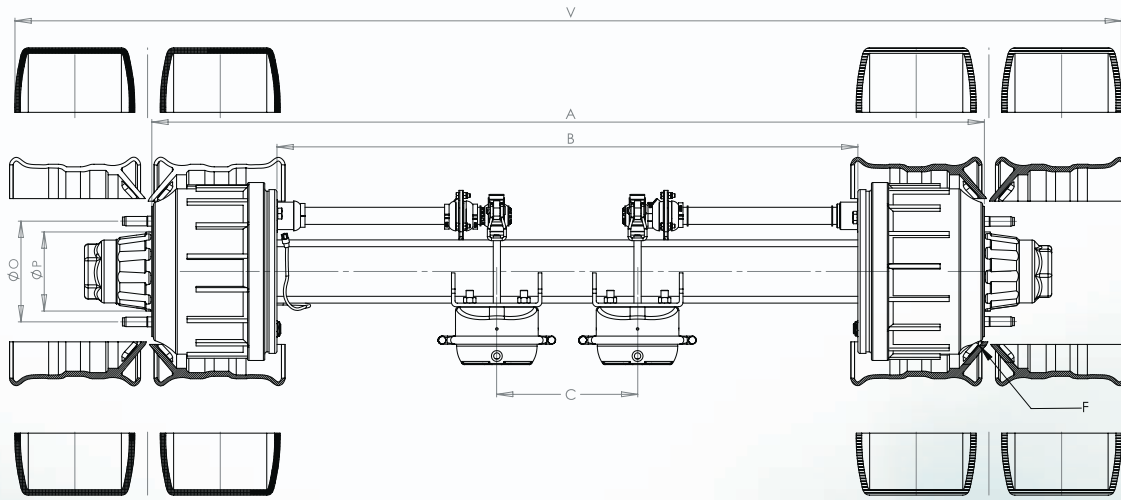


PARÇA ADI	MONTAJ NO	ADET
ARA KOVAN MONTAJI	A	
ARA KOVAN	1	1
ARA KOVAN BORUSU	2	2
AKİS	3	2
FREN TABLASI(HAZIR)	7	2
KÖRÜK BAĞLANTISI	5	2
FLANŞ	4	2
CIVATA	9	16
PUL	8	16
SAYICI SENSÖR	6	2
KAMPANA-PORYA MONTAJI	B	
PORYA	10	2
KAMPANA	15	2
ARKA RULMAN	11	2
ON RULMAN	12	2
YAĞ KEÇESİ	13	2
ABS DİŞLİSİ	14	2
BÜJON M22*1,5	16	20
BÜJON SOMUNU M22*1,5	17	20
AKİS SOMUNU	18	2
AKİS SOMUN SEGMANI	19	2
AKİS SOMUN SEGMAN PİMİ	20	2
PORYA KAPAĞI YAĞ LASTİĞİ	21	2
PORYA KAPAĞI	22	2
S KAM MİLİ MONTAJI	C	
CİRCİR	24	2
SEKMAN	25	2
PİM	26	2
KUPİLYA	27	2
FREN KÖRÜĞÜ	23	2

PART NAME	PART NAME	ITEM
AXLE PIPE ASSEMBLY	A	
AXLE PIPE	1	1
AXLE PIPE	2	2
AXLE	3	2
BRAKE TABLE	7	2
BELLOW IRON SHEET	5	2
FLANGE	4	2
NUT	9	16
STAMP	8	16
ABS SENSOR	6	2
DRUM ASSEMBLY	B	
HUB	10	2
DRUM	15	2
BACK BEARING	11	2
FRONT BEARING	12	2
OIL SEAL	13	2
ABS GEAR	14	2
WHEEL NUT	16	20
BOLT	17	20
AXLE BOLT	18	2
AXLE RING	19	2
AXLE PIN	20	2
COVER OIL RUBBER	21	2
HUB COVER	22	2
SKAM SHAFT ASSEMBLY	C	
SLACK ADJUSTER	24	2
RING	25	2
PIN	26	2
BRAKE BELLOW PIN	27	2
BRAKE BELLOW	23	2

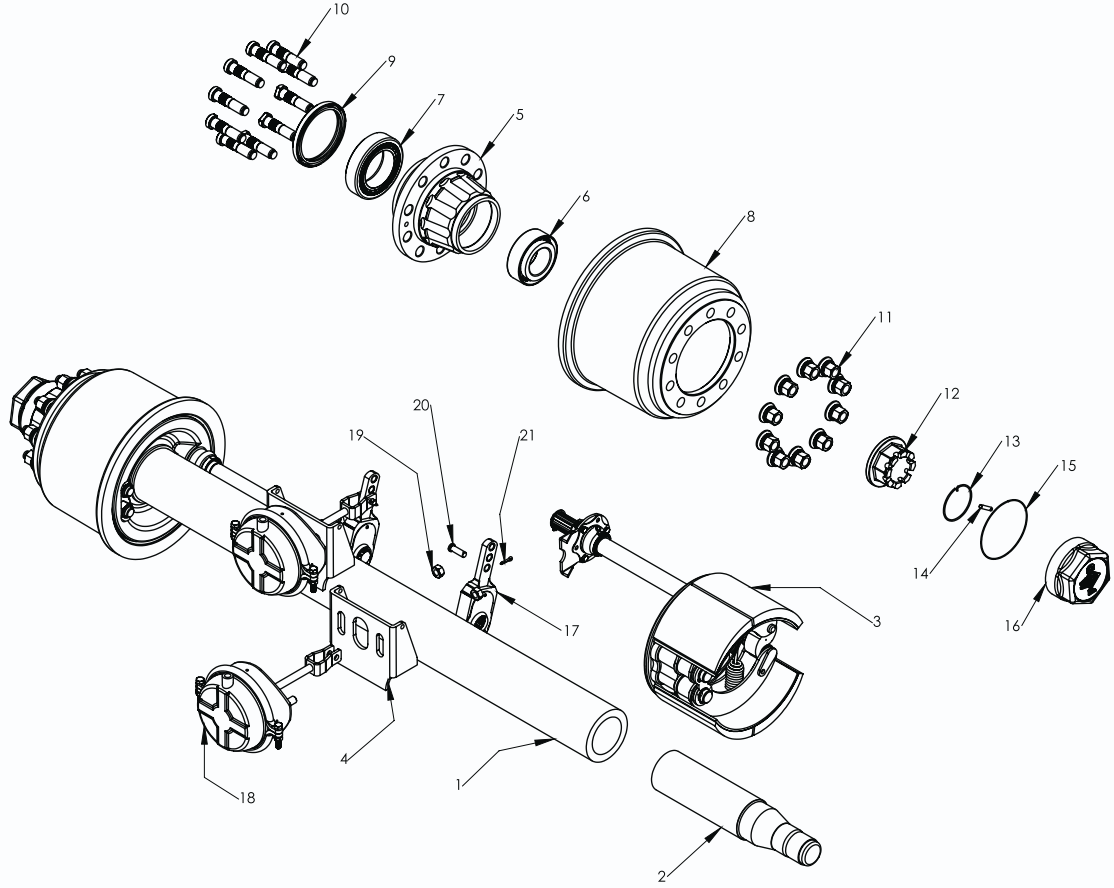


GİDİŞ YÖNÜ (DIRECTION)



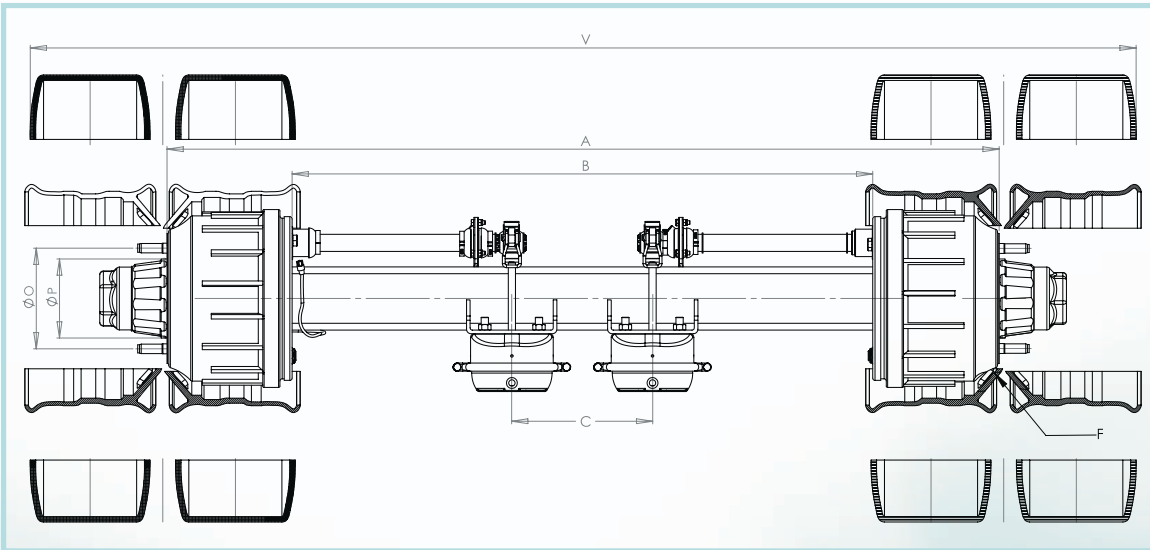
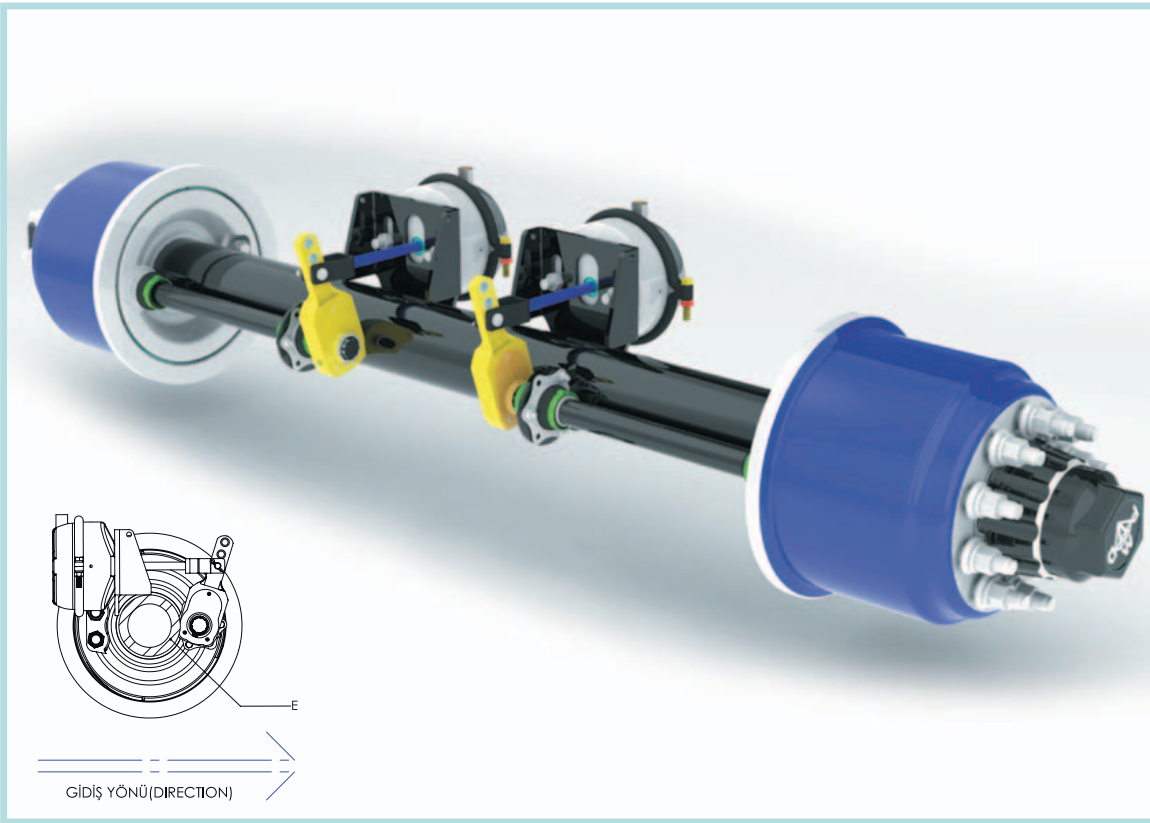
DİNGİL ADI AXLE NAME	KODU CODE	İZ MESAFESİ (A)	TOZ SACI (B)	KÖRÜK MESAFESİ (C)	ARA KOVAN (E)	KAMPANA DRUM (F)	BİJON DEL.MER. (O)	JANT ÇAPI (P)	BALATA BRAKE	RULMAN BEARING	AĞIRLIK WEIGHT	DİŞ GENİŞLİK (V)
JUMBO 195 ÇİFTLİSTİK	PD J19.5-L	1840	1280	440	□140*14	PD2012	Ø225	Ø180	Ø330*200	33213-218248	330 kg	2400

Ölçülendirme mm cinsindendir. / Dimension mm
 "A" değeri isteğe göre ayarlanabilir / "A" value is adjustable



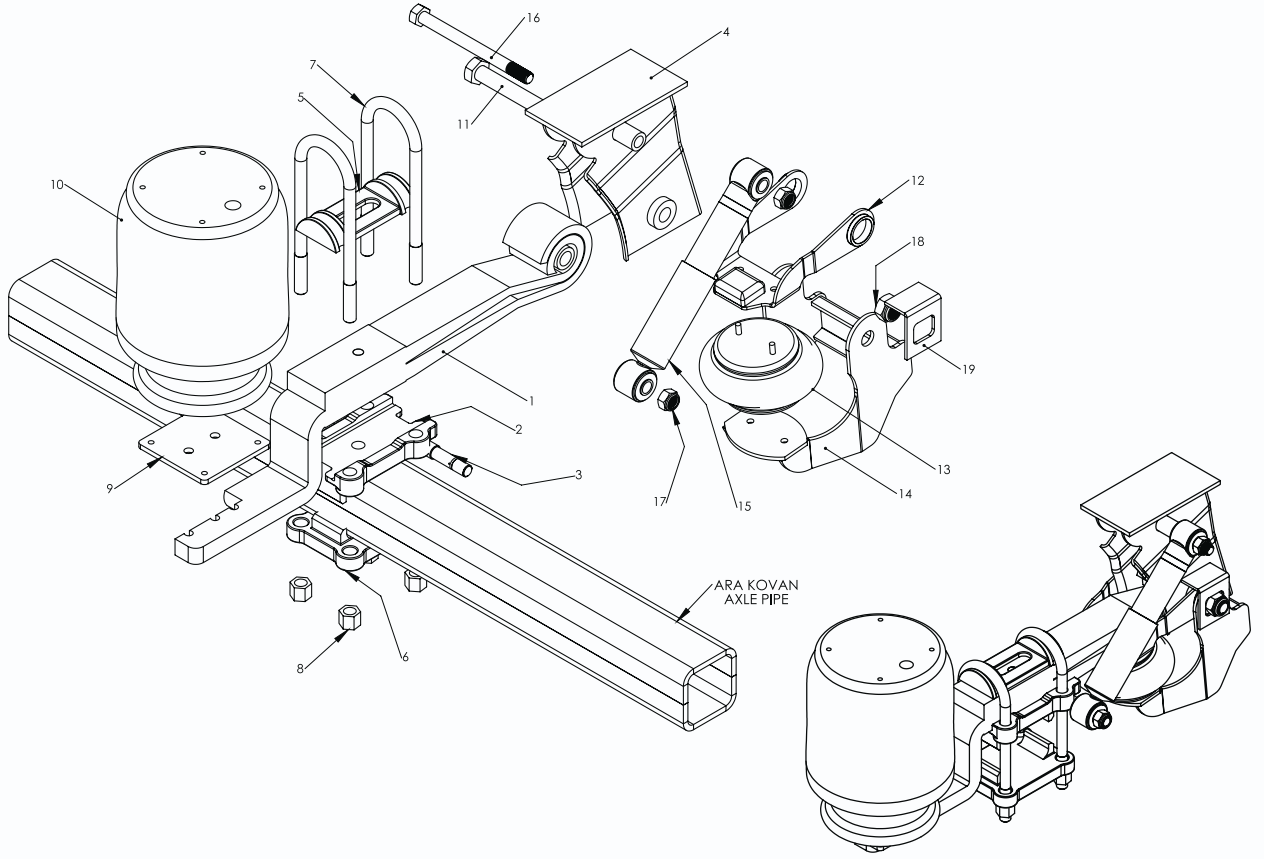
PARÇA ADI	MONTAJ NO	ADET
ARA KOVAN MONTAJI	A	
ARA KOVAN	1	1
AKİS	2	2
FREN TABLASI(HAZIR)	3	2
KÖRÜK BAĞLANTISI	4	2
KAMPANA-PORYA MONTAJI	B	
PORYA	5	2
KAMPANA	8	2
ARKA RULMAN	7	2
ON RULMAN	6	2
YAĞ KEÇESİ	9	2
BÜJON M22*1,5	10	2
BÜJON SOMUNU M22*1,5	11	20
AKİS SOMUNU	12	20
AKİS SOMUN SEGMANI	13	2
AKİS SOMUN SEGMAN PİMİ	14	2
PORYA KAPAĞI YAĞ LASTİĞİ	15	2
PORYA KAPAĞI	16	2
CİRCİR	17	2
FREN KÖRÜĞÜ	18	2
SOMUN	19	2
PİM	20	2
KUPİLYA	21	2

PART NAME	ASSEM.NU.	ITEM
AXLE PIPE ASSEMBLY	A	
AXLE PIPE	1	1
AXLE	2	2
BRAKE TABLE	3	2
BELLOW IRON SHEET	4	2
DRUM-HUB ASSEMBLY	B	
HUB	5	2
DRUM	8	2
BACK BEARING	7	2
FRONT BEARING	6	2
OIL SEAL	9	2
WHEEL NUT M22.5*1.5	10	2
BOLT M22.5*1.5	11	20
AXLE BOLT	12	20
AXLE BOLT RING	13	2
AXLE BOLT RING PIN	14	2
HUB COVER OIL RUBBER	15	2
HUB COVER	16	2
SLAC ADJUSTER	17	2
BRAKE BELLOW	18	2
BOLT	19	2
PIN	20	2
BRAKE BELLOW PIN	21	2



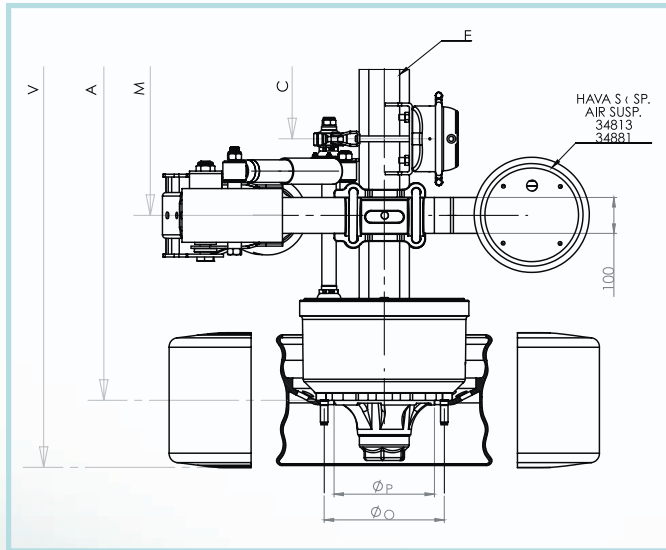
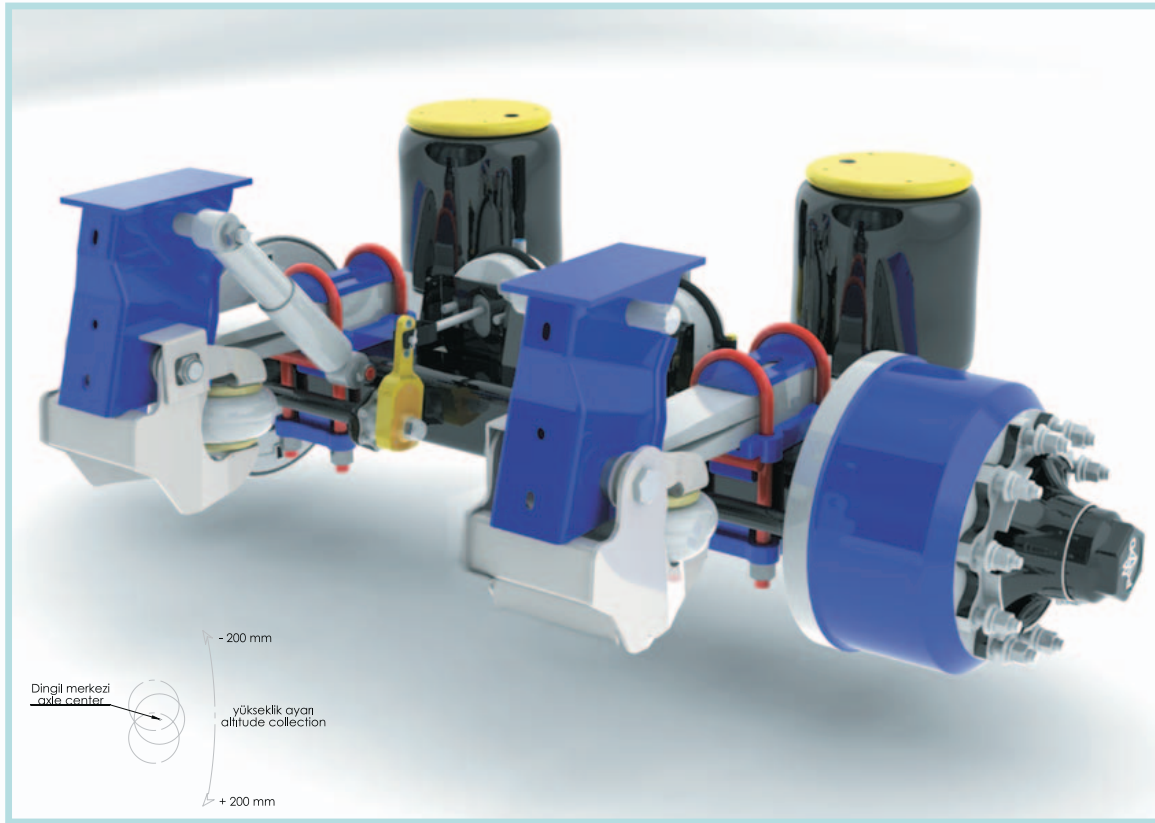
DİNGİL ADI AXLE NAME	KODU CODE	İZ MESAFESİ (A)	TOZ SACI (B)	KÖRÜK MESAFESİ (C)	ARA KOVAN (E)	KAMPA DUM (F)	BİJON DEL.MER. (O)	JANT ÇAPİ (P)	BALATA BRAKE	RULMAN BEARING	AĞIRLIK WEIGHT	DIŞ GENİŞLİK (V)
JUMBO 175 ÇİFTLİSTİK	PD J17.5-L	1840	1290	440	Ø127*20	PD2012	Ø225	Ø180	Ø305*200	33213 - 218248	330 kg	2400

Ölçülendirme mm cinsindendir. / Dimension mm
 "A" değeri isteğe göre ayarlanabilir / "A" value is adjustable

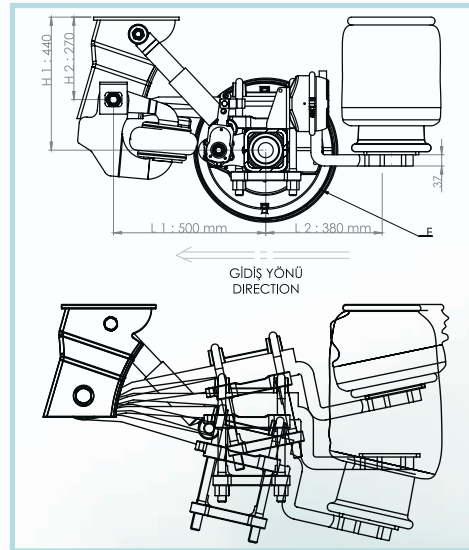


PARÇA ADI	MONTAJ NO	ADET
ARA KOVAN		
Z MAKAS	1	2
MAKAS ORTA KEP	2	2
MAKAS ALT KEP	6	2
MAKAS ÜST KEP	5	2
SIKTIRMA	7	4
SIKTIRMA SOMUNU	8	8
SÜSPANSİYON KÖRÜĞÜ	10	2
KÖRÜK MAKAS BAĞLANTI	9	2
ORTA KEP PERNOSU	3	2
AMORTİSÖR	15	2
AMORTİSÖR - KULAK PERNOSU	16	2
PERNO SOMUNU	17	4
ALT KALDIRMA ÇENESİ	14	2
ÜST KALDIRMA ÇENESİ	12	2
BOĞUMLU KÖRÜK	13	2
SABİTLEME SACI	9	2
PERNO SOMUNU	18	2
KULAK-MAKAS PERNOSU	11	2

PART NAME	ASSEM.NU.	ITEM
AXLE PIPE		
Z SPRING	1	2
SPRING CAST IRON TABLE	2	2
SPRING BOTTOM CAST IRON	6	2
SPRING TOP CAST IRON	5	2
U BOLT	7	4
U BOLT NUT	8	8
AIR SUSPENSION	10	2
SPRING CONNECT IRON SHEET	9	2
CAST IRON PIN	3	2
SHOCK ABSORBER	15	2
SPRING PIN	16	2
PIN NUT	17	4
LUG IRON SHEET	14	2
LUG IRON SHEET	12	2
AIR SUSPENSION	13	2
LOCK IRON SHEET	9	2
PIN NUT	18	2
SPRING - LUG PIN	11	2

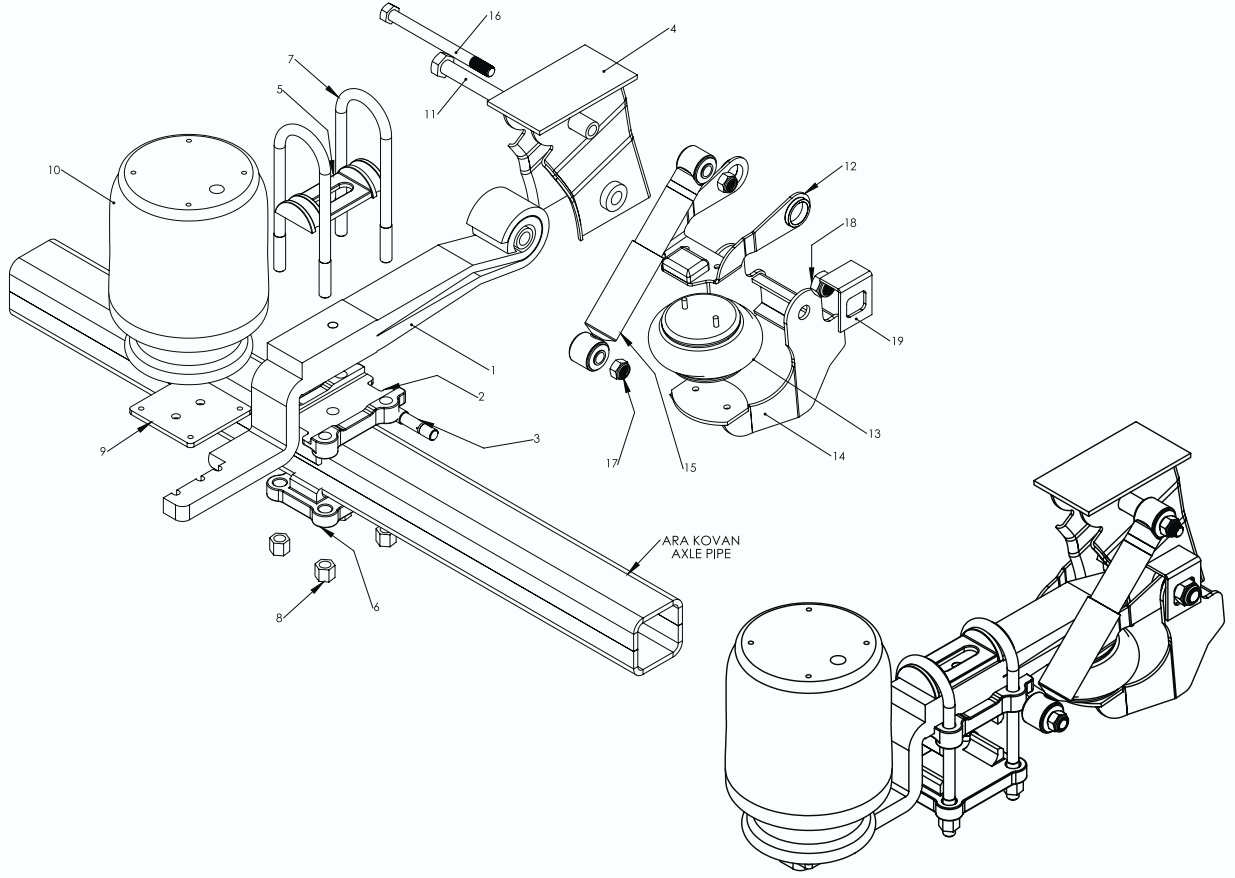


Ağırlık tek dingil kaldırmalı sistem içindir. / Weight one lift axle



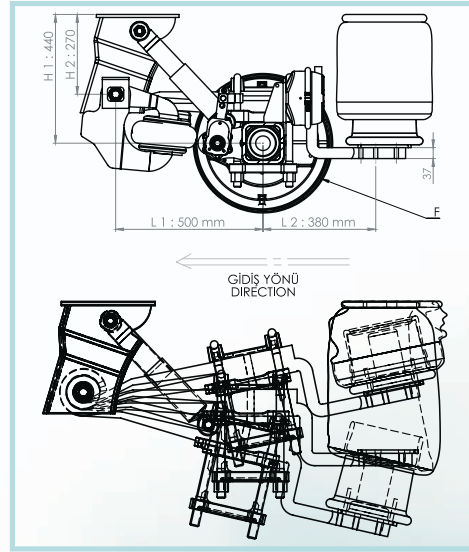
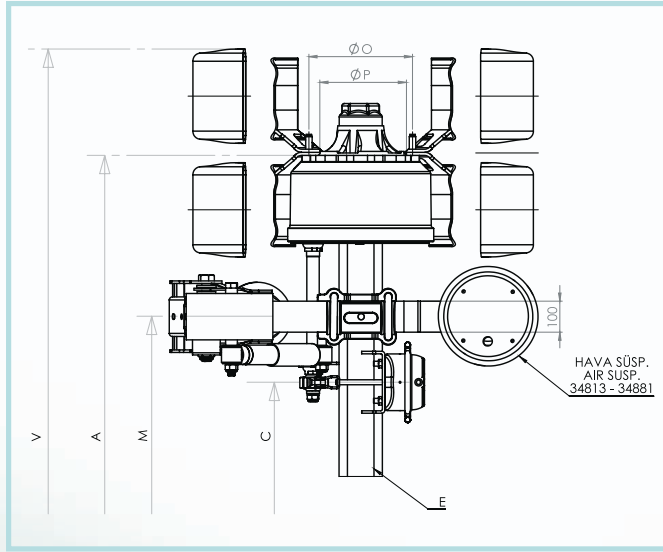
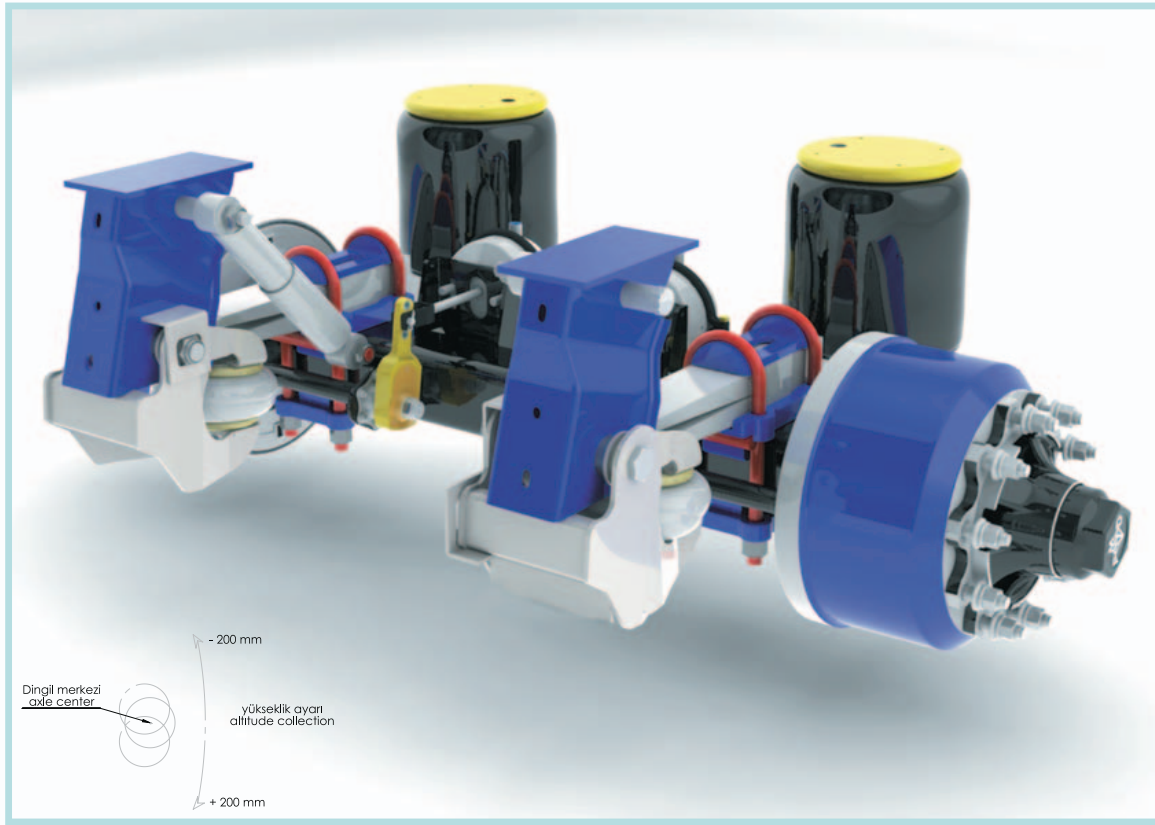
DİNGİL ADI AXLE NAME	KODU CODE	İZ MESAFESİ (A)	MAKAS MERKEZİ (M)	KÖRÜK MESAFESİ (C)	ARA KOVAN (E)	KAMPA DRUM (F)	BİJON DE.MER. (O)	JANT ÇAPİ (P)	BALATA (F)	RULMAN BEARING	AĞIRLIK WEIGHT	DİŞ GENİŞLİK (V)
12 TON TEK LASTİK HAVA SÜSPANSİYON DİNGİL	PD HSP12	2080	1300	570	□140*14	PD-2045	Ø335	Ø280	Ø420-200	33213-218248	626 kg	2470

Ölçülendirme mm cinsindendir. / Dimension mm
 "A" değeri isteğe göre ayarlanabilir / "A" value is adjustable



PARÇA ADI	MONTAJ NO	ADET
ARA KOVAN		
Z MAKAS	1	2
MAKAS ORTA KEP	2	2
MAKAS ALT KEP	6	2
MAKAS ÜST KEP	5	2
SIKTIRMA	7	4
SIKTIRMA SOMUNU	8	8
SÜSPANSİYON KÖRÜĞÜ	10	2
KÖRÜK MAKAS BAĞLANTI SACI	9	2
ORTA KEP PERNOSU	3	2
AMORTİSÖR	15	2
AMORTİSÖR - KULAK PERNOSU	16	2
PERNO SOMUNU	17	4
ALT KALDIRMA ÇENESİ	14	2
ÜST KALDIRMA ÇENESİ	12	2
BOĞUMLU KÖRÜK	13	2
SABİTLEME SACI	9	2
PERNO SOMUNU	18	2
KULAK-MAKAS PERNOSU	11	2

PART NAME	ASSEM.NU.	ITEM
AXLE PIPE		
Z SPRING	1	2
SPRING CAST IRON TABLE	2	2
SPRING BOTTOM CAST IRON	6	2
SPRING TOP CAST IRON	5	2
U BOLT	7	4
U BOLT NUT	8	8
AIR SUSPENSION	10	2
SPRING CONNECT IRON SHEET	9	2
CAST IRON PIN	3	2
SHOCK ABSORBER	15	2
SPRING PIN	16	2
PIN NUT	17	4
LUG IRON SHEET	14	2
LUG IRON SHEET	12	2
AIR SUSPENSION	13	2
LOCK IRON SHEET	9	2
PIN NUT	18	2
SPRING - LUG PIN	11	2

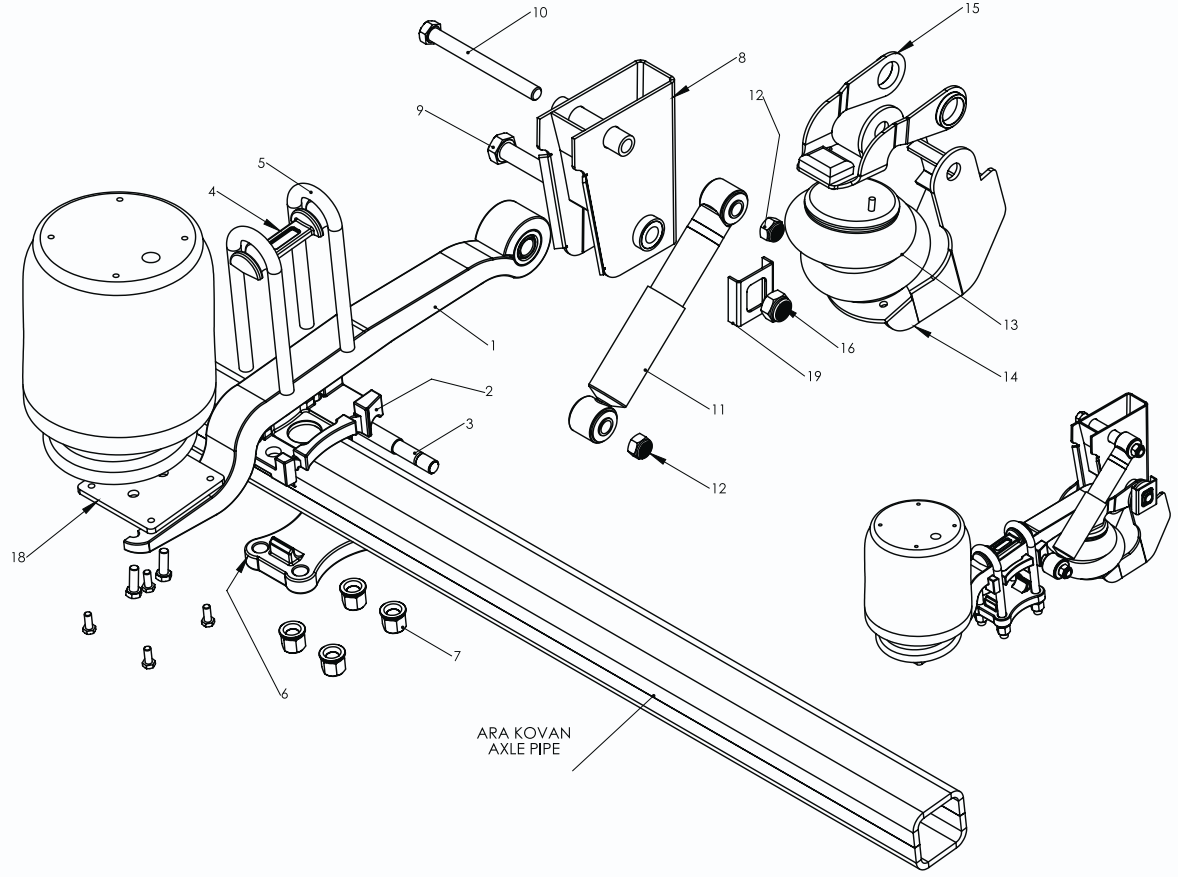


Ağırlık tek dingil kaldırmalı sistem içindir. / Weight one lift axle

DİNGİL ADI AXLE NAME	KODU CODE	İZ MESAFESİ (A)	MAKAS MERKEZİ (M)	KÖRÜK MESAFESİ (C)	ARA KOVAN (E)	KAMPA DRUM (F)	BİJON DEM. MER. (O)	JANT ÇAPİ (P)	BALATA (F)	RULMAN BEARING	AĞIRLIK WEIGHT	DİŞ GENİŞLİK (V)
12 TON ÇİFT LASTİK HAVA SÜSPANSİYON DİNGİL	PDHSL12	1840	950	335	□140*14	PD-2045	Ø335	Ø280	Ø420-200	33213 - 218248	636 kg	2490
14 TON ÇİFT LASTİK HAVA SÜSPANSİYON DİNGİL	PDHSL14	1840	950	335	□140*14	PD-2045	Ø335	Ø280	Ø420-200	33019 - 33215	636 kg	2490
16 TON ÇİFT LASTİK HAVA SÜSPANSİYON DİNGİL	PDHSL16	1840	950	335	□140*14	PD-2045	Ø335	Ø280	Ø420-220	32314 - 32222	726 kg	2490

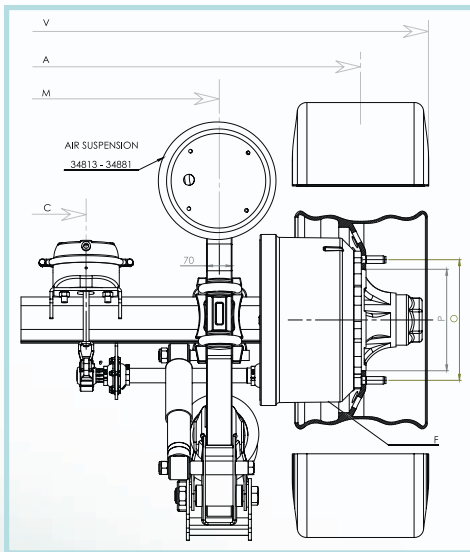
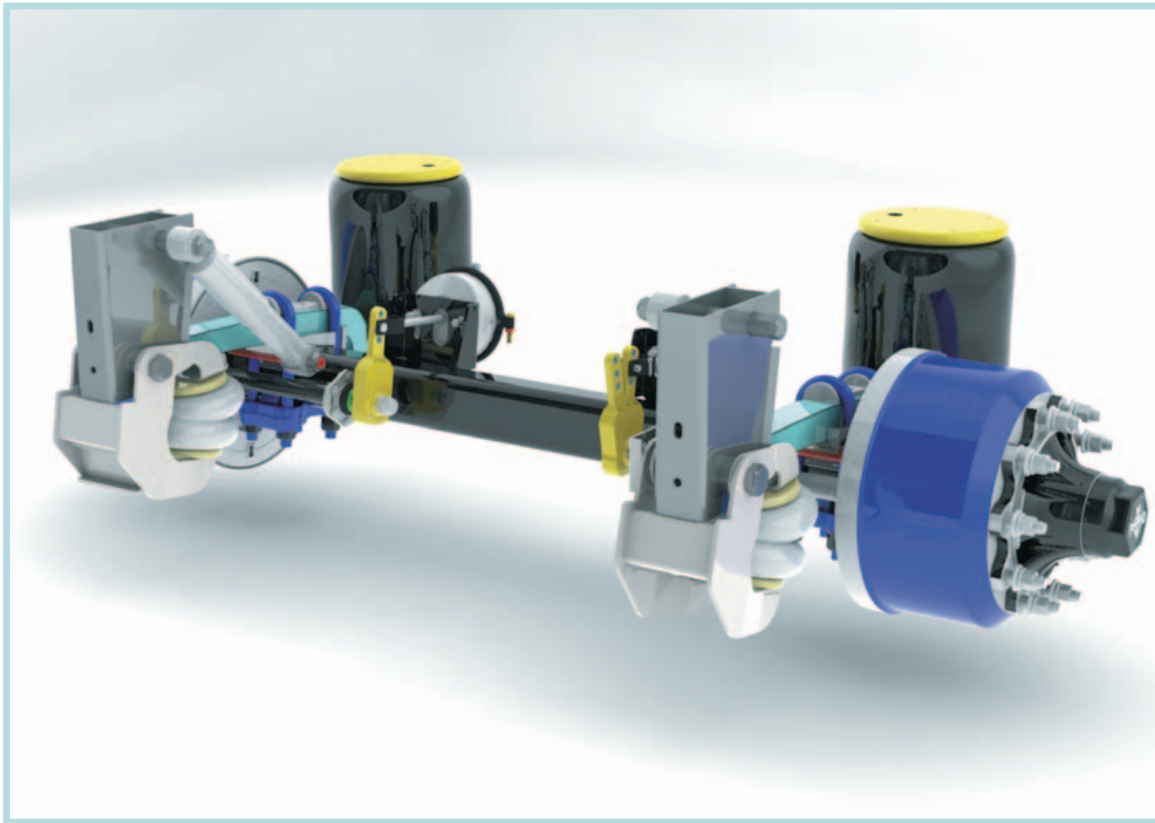
Ölçülendirme mm cinsindendir. / Dimension mm

“A” değeri isteğe göre ayarlanabilir / “A” value is adjustable

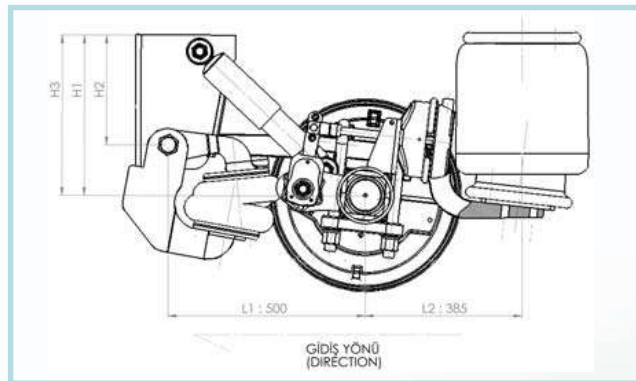


PARÇA ADI	MONTAJ NO	ADET
7'LİK MAKAS	1	2
9 TON ORTA KEP	2	2
ORTA KEP PERNOSU	3	2
MAKAS ÜST KEPE	4	2
SIKTIRMA	5	4
MAKAS ALT KEPE	6	2
SIKTIRMA SOMUNU	7	8
HAFİF TİP KULAK	8	2
MAKAS-KULAK PERNOSU	9	2
AMORTİSÖR-KULAK PERNOSU	10	2
AMORTİSÖR	11	2
PERNO SOMUNU	12	4
KALDIRMA KÖRÜĞÜ	13	2
KALDIRMA ALT ÇENESİ	14	2
KALDIRMA ÜST ÇENESİ	15	2
MAKASKULAK PERNOSU	16	2
SÜSPANSİYON KÖRÜĞÜ	17	2
MAKASKÖRÜK BAĞLANTISACI	18	2
SOMUN SABİTLEMESİ	19	2

PART NAME	ASSEM.NU.	ITEM
70 mm SPRING	1	2
9 TON CAST IRON	2	2
CAST IRON PIN	3	2
SPRING TOP CAST IRON	4	2
U BOLT	5	4
SPRING BOTTOM CAST IRON	6	2
U BOLT NUT	7	8
SMALL LUG	8	2
SPRING - LUG PIN	9	2
SHOCK ABSORBER PIN	10	2
SHOCK ABSORBER	11	2
PIN NUT	12	4
LIFT BELLOW	13	2
LIFT BOTTOM CLAW	14	2
LIFT TOP CLAW	15	2
PIN NUT	16	2
AIR SUSPENSION	17	2
SPRING-BELLOW CONJIRON SHEET	18	2
NUT LOCK IRON SHEET	19	2



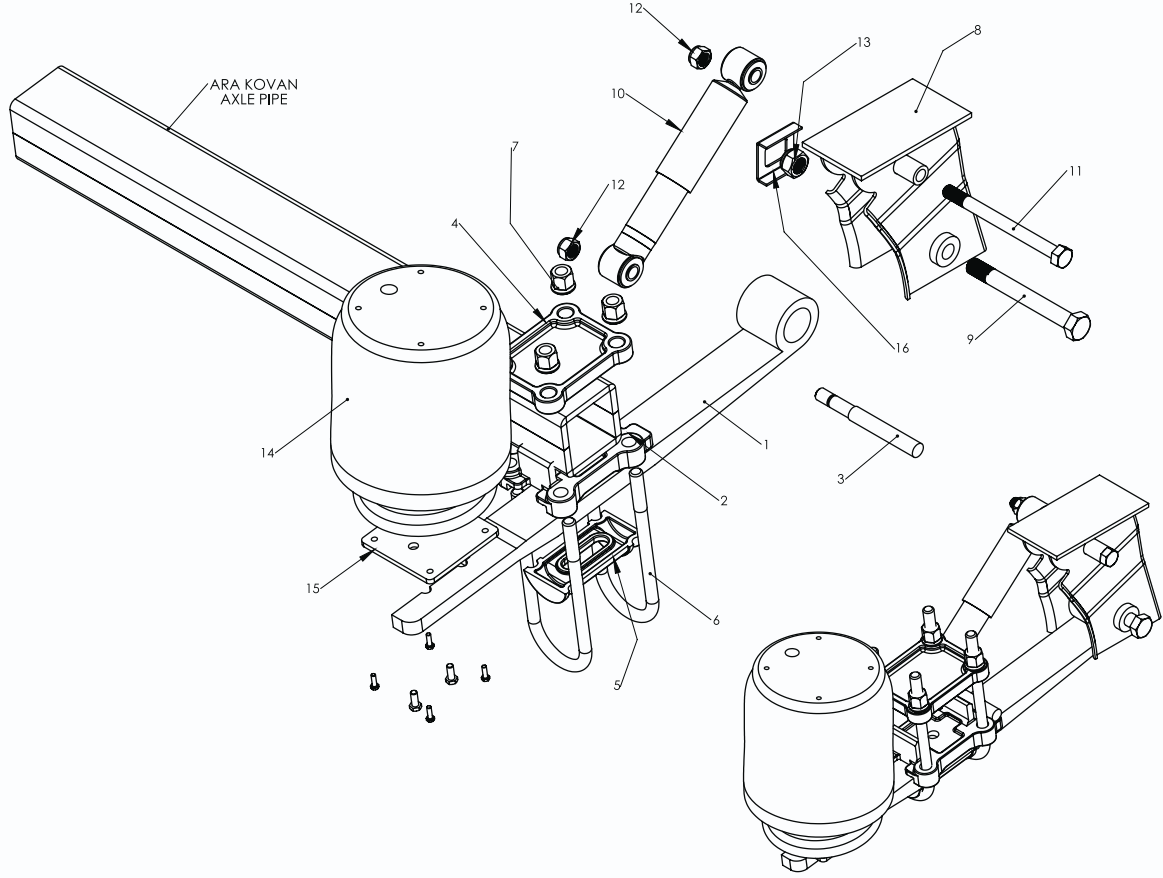
Ağırlık tek dingil kaldırmalı sistem içindir. / Weight one lift axle



KULAK YÜKSEKLİĞİ (H2)	SÜRÜŞ YÜKSEKLİĞİ (H1) PD HS P09	SÜRÜŞ YÜKSEKLİĞİ (H3) PD HS P12
240	400	415
270	430	445

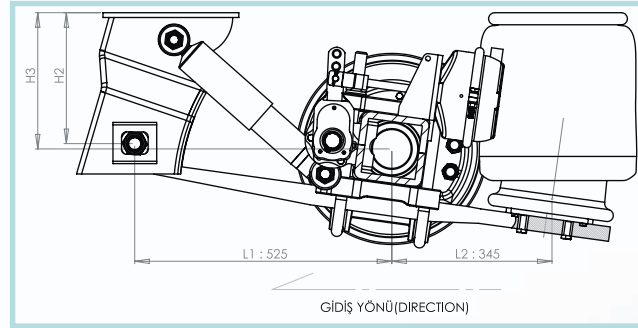
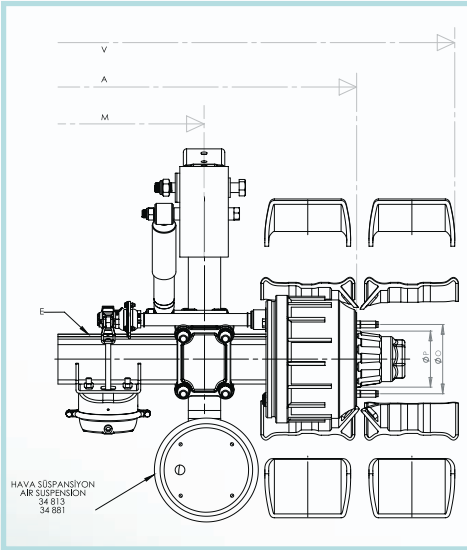
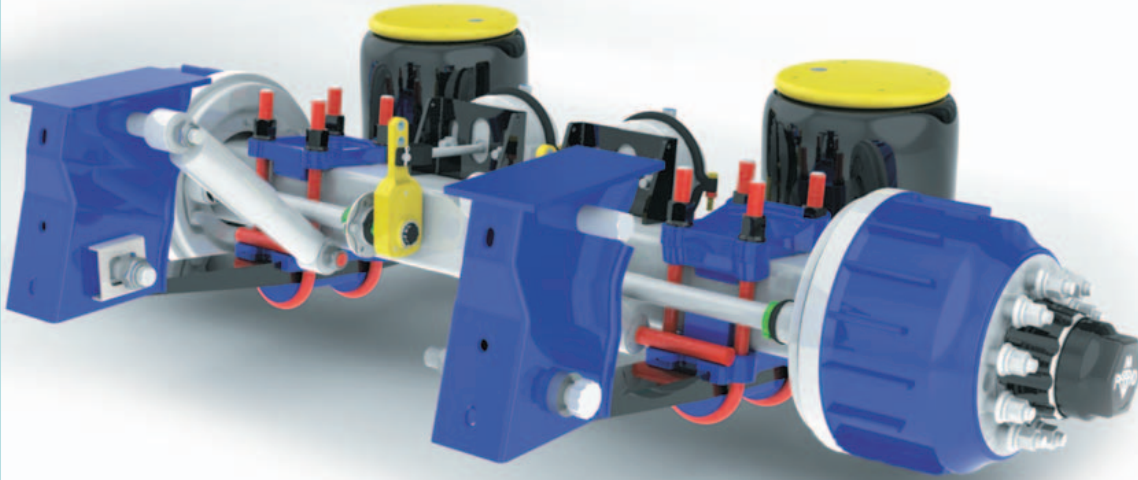
DİNGİL ADI AXLE NAME	KODU CODE	İZ MESAFESİ (A)	MAKAS MERKEZİ (M)	KÖRÜK MESAFESİ (C)	ARA KOVAN (E)	KAMPANA DRUM (F)	BİJON DE.MER. (O)	JANT ÇAPI (P)	BALATA BRAKE	RULMAN BEARING	AĞIRLIK WEIGHT	DİŞ GENİŞLİK (V)
HAVA SÜSPANSİYONLU 9 TON PİLOT 9 TON AIR SUSPENSION AXLE	PD HS P09 axle (PD P 09)	2080	1300	570	<input type="checkbox"/> 120-12	PD-2021 PD-2045	Ø335	Ø280	Ø420*180-200	33213-218248	530 kg	2470
HAVA SÜSPANSİYONLU 12 TON PİLOT 12 TON AIR SUSPENSION AXLE	PD HS P12 axle (PD P 12)	2080	1300	570	<input type="checkbox"/> 140-12	PD-2045	Ø335	Ø280	Ø420*200	33213-218248	570 kg	2470

Ölçülendirme mm cinsindendir. / Dimension mm
 “A” değeri isteğe göre ayarlanabilir / “A” value is adjustable



PARÇA ADI	MONTAJ NO	ADET
MAKAS	1	2
ORTA KEP	2	2
ORTA KEP PERNOSU	3	2
MAKAS ALT KEP	4	2
MAKAS ÜST KEP	5	2
SIKTIRMA	6	4
SIKTIRMA SOMUNU	7	8
AĞIR TİP KULAK	8	2
KULAK - MAKAS PERNOSU	9	2
AMORTİSÖR	10	2
AMORTİSÖR KULAK PERNOSU	11	2
PERNO SOMUNU	12	4
PERNO SOMUNU	13	2
SÜSPANSİYON KÖRÜĞÜ	14	2
MAKAS-ÖKÜRK BAĞLANTI SACS	15	2
PERNO - KULAK SABİTLEMESİ	16	2

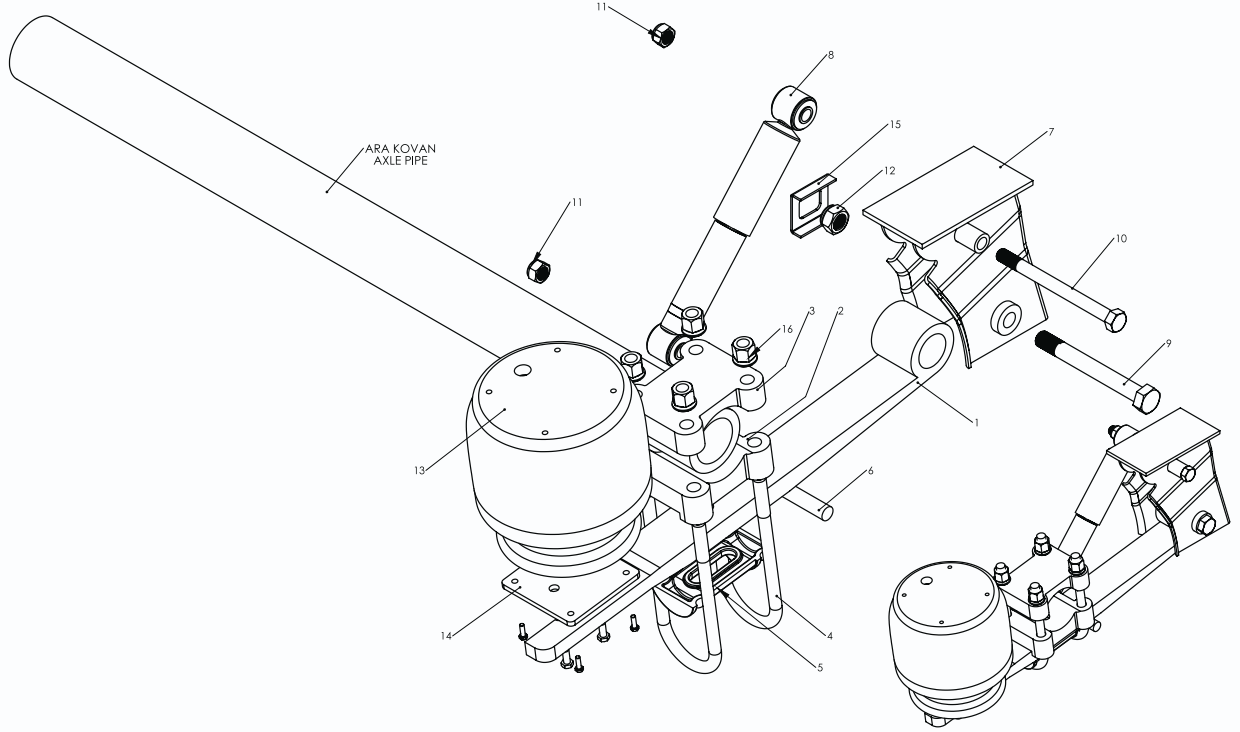
PART NAME	ASSEM.NU.	ITEM
SPRING	1	2
PIN CAST IRON TABLE	2	2
CAST IRON TABLE PIN	3	2
TABLE BOTTOM CAST IRON	4	2
TABLE TOP CAST IRON	5	2
U BOLT	6	4
U BOLT NUT	7	8
BIG LUG	8	2
LUG - SPRING PIN	9	2
SHOCK ABSORBER	10	2
LUG - ABSORBER PIN	11	2
PIN NUT	12	4
PIN NUT	13	2
AIR SUSPENSION	14	2
CONNECT IRON SHEET	15	2
PIN - LUG LOCK IRON SHEET	16	2



KULAK YÜKSEKLİĞİ (H2)	SÜRÜŞ YÜKSEKLİĞİ (H1) PD HS J17.5	SÜRÜŞ YÜKSEKLİĞİ (H3) PD HS J19.5
240	290	280
270	320	310

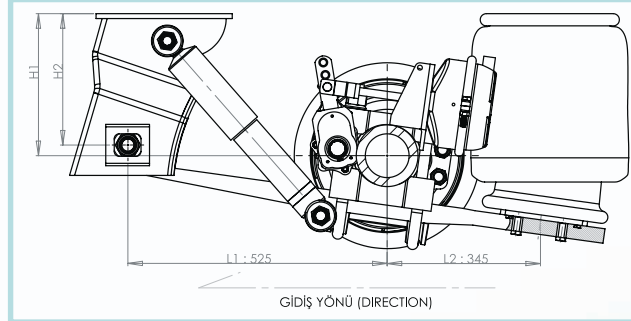
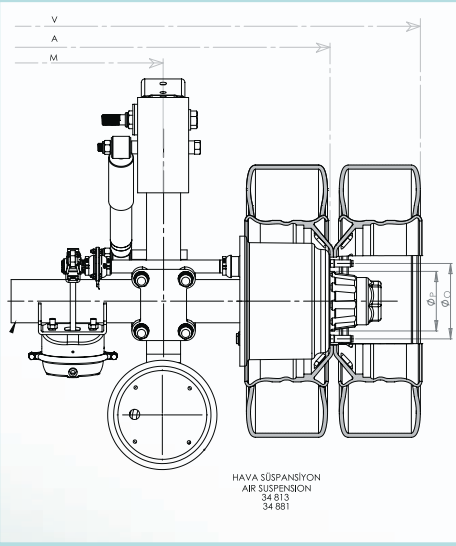
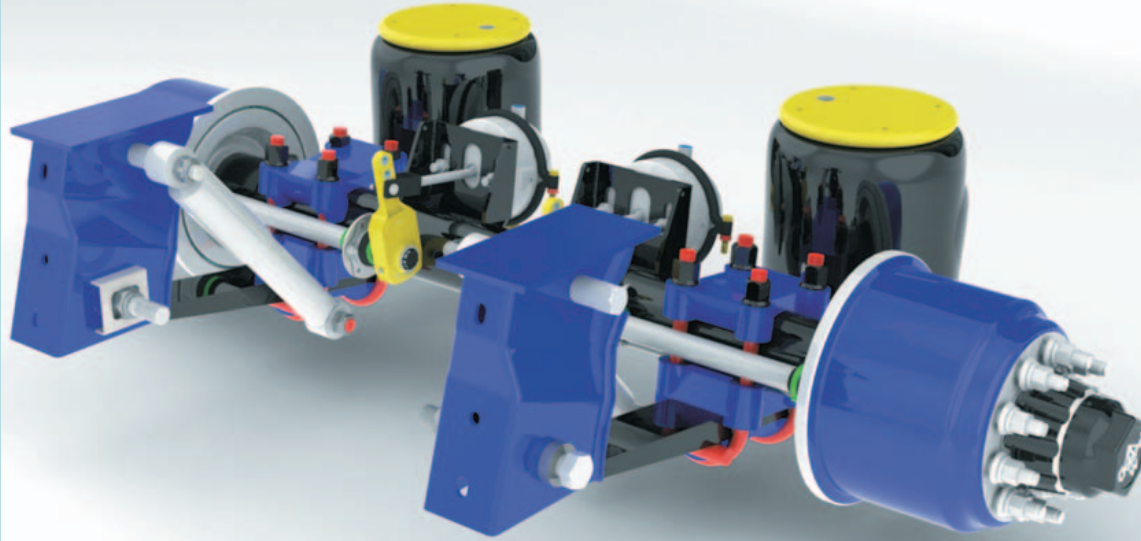
DİNGİL ADI AXLE NAME	KODU CODE	İZ MESAFESİ (A)	MAKAS MERKEZİ (M)	KÖRÜK MESAFESİ (C)	ARA KOVAN (E)	KAMPA DRUM (F)	BİJON ÇAPI (P)	JANT ÇAPI (P)	BALATA BRAKE	RULMAN BEARING	AĞIRLIK WEIGHT	DİŞ GENİŞLİK (V)
HAVA SÜSPANSİYON KATÇI LASTİK 19.5 JANT JUMBO DİNGİL AIR SUSP. 19.5 RIM AXLE	PD HS J19.5	1840	900	335	□140*14	PD-2012	Ø225	Ø180	Ø330-200	33213-218248	522 kg	2400

Ölçülendirme mm cinsindendir. / Dimension mm
 "A" değeri isteğe göre ayarlanabilir / "A" value is adjustable



PARÇA ADI	MONTAJ NO	ADET
MAKAS	1	2
ORTA KEP	2	2
MAKAS ALT KEP	3	2
SIKTIRMA	4	4
MAKAS ÜST KEP	5	2
ORTA KEP PERNO	6	2
AMORTİSÖR	8	2
KULAK - MAKAS PERNO	9	2
AMORTİSÖR PERNO	10	2
PERNO SOMUNU	11	4
KULAK - MAKAS PERNO SOMUNU	12	2
SÜSPANSİYON KÖRÜĞÜ	13	2
MAKAS - KÖRÜK BAĞLANTI SADI	14	2
AĞIR TİP KULAK	7	2
SOMUN SABİTLEMESİ	15	2
SIKTIRMA SOMUNU	16	8

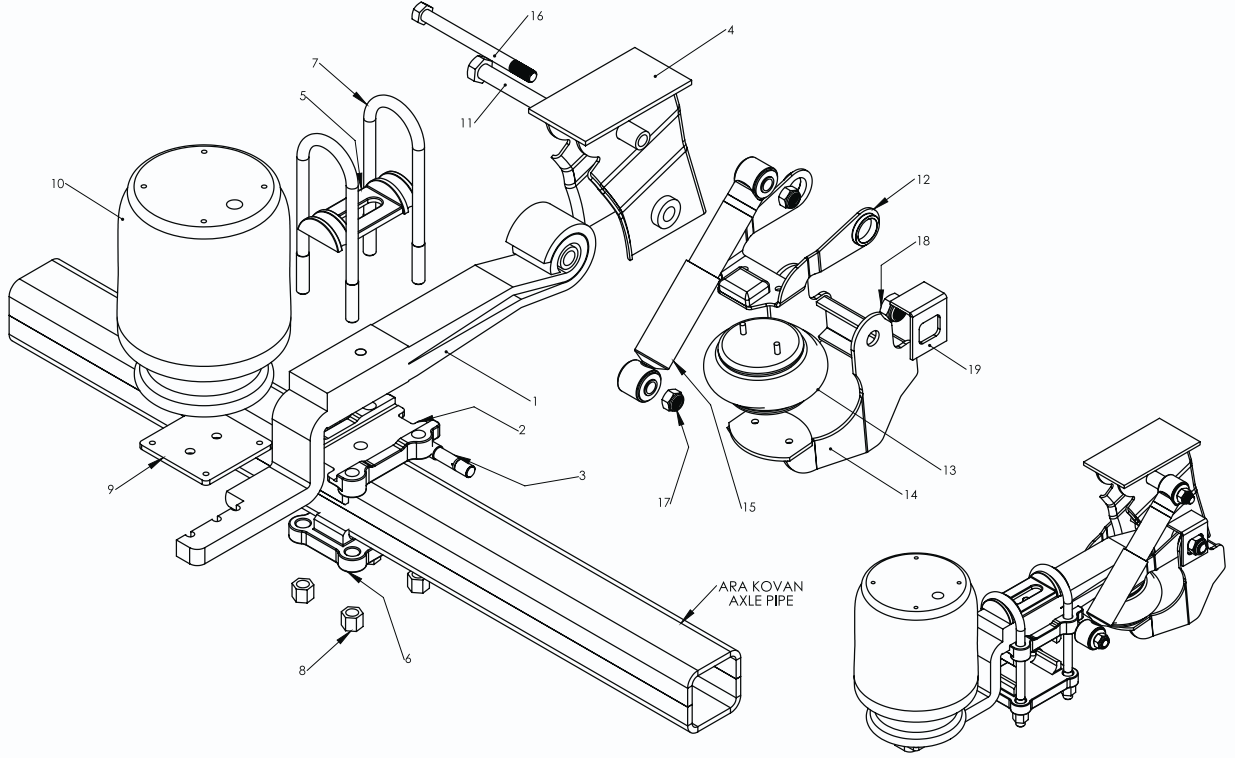
PART NAME	ASSEM.NU.	ITEM
SPRING	1	2
CAST IRON TABLE	2	2
SPRING BOTTOM CAST IRON	3	2
U BOLT	4	4
SPRING TOP CAST IRON	5	2
CAST IRON TABLE PIN	6	2
SHOCK ABSORBER	8	2
LUG - SPRING PIN	9	2
SHOCK ABSORBER PIN	10	2
PIN NUT	11	4
LUG - SPRING PIN NUT	12	2
AIR SUSPENSION	13	2
CONNECT IRON SHEET	14	2
BIG LUG	7	2
NUT LOCK IRON SHEET	15	2
U BOLT	16	8



KULAK YÜKSEKLİĞİ (H2)	SÜRÜŞ YÜKSEKLİĞİ (H1) PD HS J17.5	SÜRÜŞ YÜKSEKLİĞİ (H3) PD HS J19.5
240	290	280
270	320	310

DİNGİL ADI AXLE NAME	KODU CODE	İZ MESAFESİ (A)	MAKAS MERKEZİ (M)	KÖRÜK MESAFESİ (C)	ARA KOVAN (E)	KAMPA NA DRUM (F)	BİJON ÇAPI (P)	JANT ÇAPI (P)	BALATA BRAKE	RULMAN BEARING	AĞIRLIK WEIGHT	DİŞ GENİŞLİK (V)
HAVA SÜSPANSİYON KAT ÇİFT LASTİK 17.5 JANT JUMBO DİNGİL AIR SUSPENSION 17.5 RIM AXLE	PD HS J17.5	1840	950	335	Ø127*Ø90	PD-2012	Ø225	Ø180	Ø330-200	33213-218248	492 kg	2380

Ölçülendirme mm cinsindendir. / Dimension mm
 "A" değeri isteğe göre ayarlanabilir / "A" value is adjustable

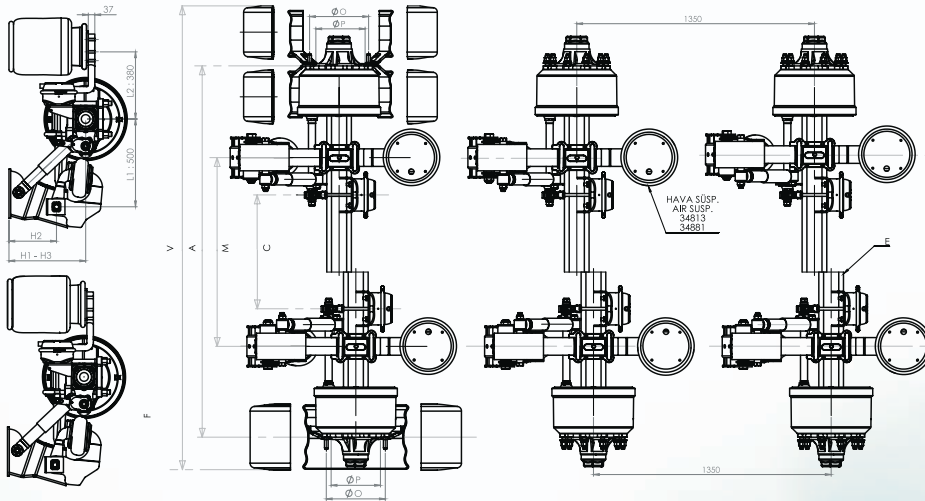


PARÇA ADI	MONTAJ NO	ADET
ARA KOVAN		
Z MAKAS	1	2
MAKAS ORTA KEP	2	2
MAKAS ALT KEP	6	2
MAKAS ÜST KEP	5	2
SIKTIRMA	7	4
SIKTIRMA SOMUNU	8	8
SÜSPANSİYON KÖRÜĞÜ	10	2
KÖRÜK MAKAS BAĞLANTI SACI	9	2
ORTA KEP PERNOSU	3	2
AMORTİSÖR	15	2
AMORTİSÖR - KULAK PERNOSU	16	2
PERNO SOMUNU	17	4
ALT KALDIRMA ÇENESİ	14	2
ÜST KALDIRMA ÇENESİ	12	2
BOĞUMLU KÖRÜK	13	2
SABİTLEME SACI	9	2
PERNO SOMUNU	18	2
KULAK-MAKAS PERNOSU	11	2

PART NAME	ASSEM.NU.	ITEM
AXLE PIPE		
Z SPRING	1	2
SPRING CAST IRON TABLE	2	2
SPRING BOTTOM CAST IRON	6	2
SPRING TOP CAST IRON	5	2
U BOLT	7	4
U BOLT NUT	8	8
AIR SUSPENSION	10	2
SPRING IRON SHEET	9	2
CAST IRON PIN	3	2
SHOCK ABSORBER	15	2
LUG PIN	16	2
PIN NUT	17	4
LUG IRON SHEET	14	2
LUG IRON SHEET	12	2
AIR SUSPENSION	13	2
LOCK IRON SHEET	9	2
PIN NUT	18	2
LUG-SPRING PIN	11	2



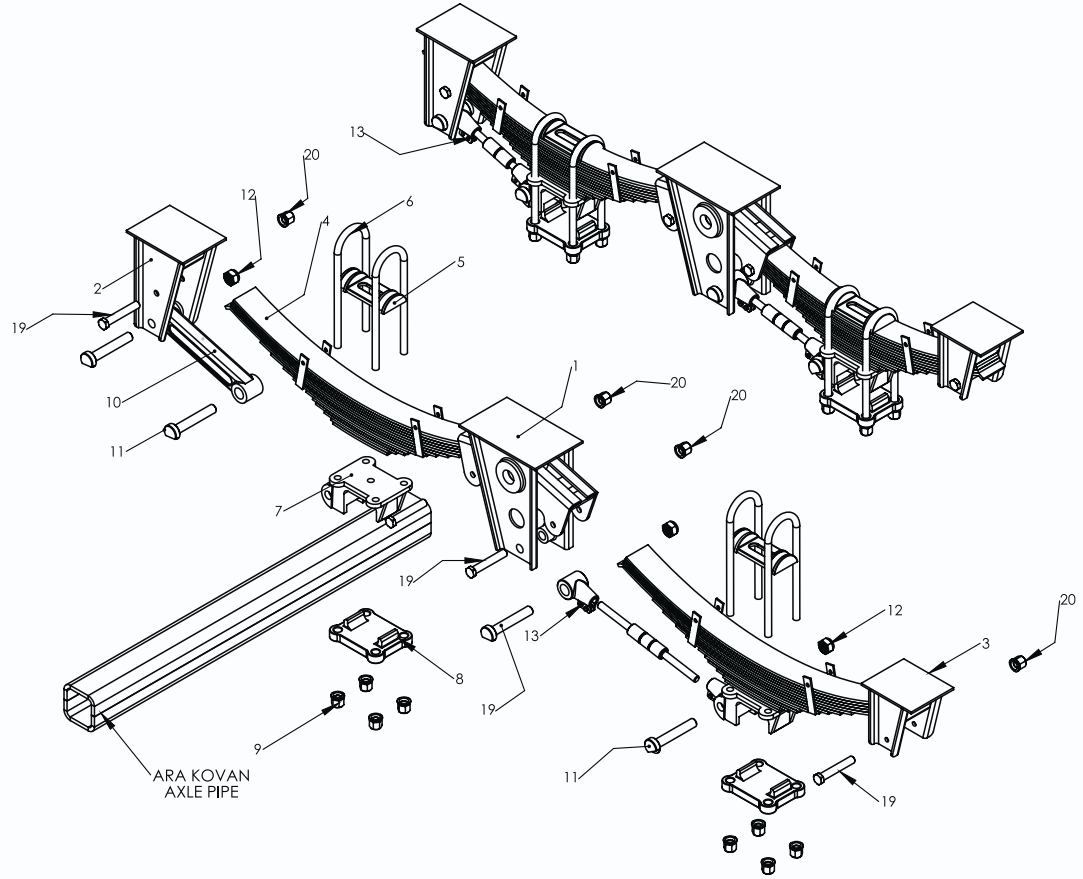
KULAK YÜKSEKLİĞİ (H2)	SÜRÜŞ YÜKSEKLİĞİ (H1) PD HS P09	SÜRÜŞ YÜKSEKLİĞİ (H3) PD HS P-L
240	400	415
270	430	445



DİNGİL ADI AXLE NAME	KODU CODE	İZ MESAFESİ (A)	MAKAS MERKEZİ (M)	KÖRÜK MESAFESİ (C)	ARA KOVAN (E)	KAMPANA DRUM (F)	BİJON DE.MER. (P)	JANT ÇAPI (P)	BALATA (F)	RULMAN BEARING	DİŞ GENİŞLİK (V)
9 TON HAVA SÜSPANSİYON DİNGİL 9 TON AIR SUSPENSION AXLE	PD HS P09 axle(PD P09)	2080	1300	570	Ø120*12	PD-2021 PD-2045	Ø335	Ø280	Ø420*180-200	33213 - 218248	2470
12 TON HAVA SÜSPANSİYON DİNGİL 12 TON AIR SUSPENSION AXLE	PD HS P12 axle(PD P 12)	2080	1300	570	Ø140*12	PD-2045	Ø335	Ø280	Ø420*200	33213 - 218248	2470
12 TON HAVA SÜSPANSİYON DİNGİL 12 TON AIR SUSPENSION AXLE	PD HS L12 axle(PD L 12)	1840	950	335	Ø140*14	PD-2045	Ø335	Ø280	Ø420*200	33213 - 218248	2490
14 TON HAVA SÜSPANSİYON DİNGİL 14 TON AIR SUSPENSION AXLE	PD HS L14 axle(PD L 14)	1840	950	335	Ø140*14	PD-2045	Ø335	Ø280	Ø420*200	33019 - 33215	2490
16 TON HAVA SÜSPANSİYON DİNGİL 16 TON AIR SUSPENSION AXLE	PD HS L16 axle(PD L 16)	1840	950	335	Ø140*14	PD-2045	Ø335	Ø280	Ø420*220	32314 - 32222	2490

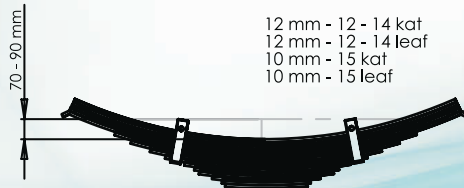
Ölçülendirme mm cinsindendir. / Dimension mm

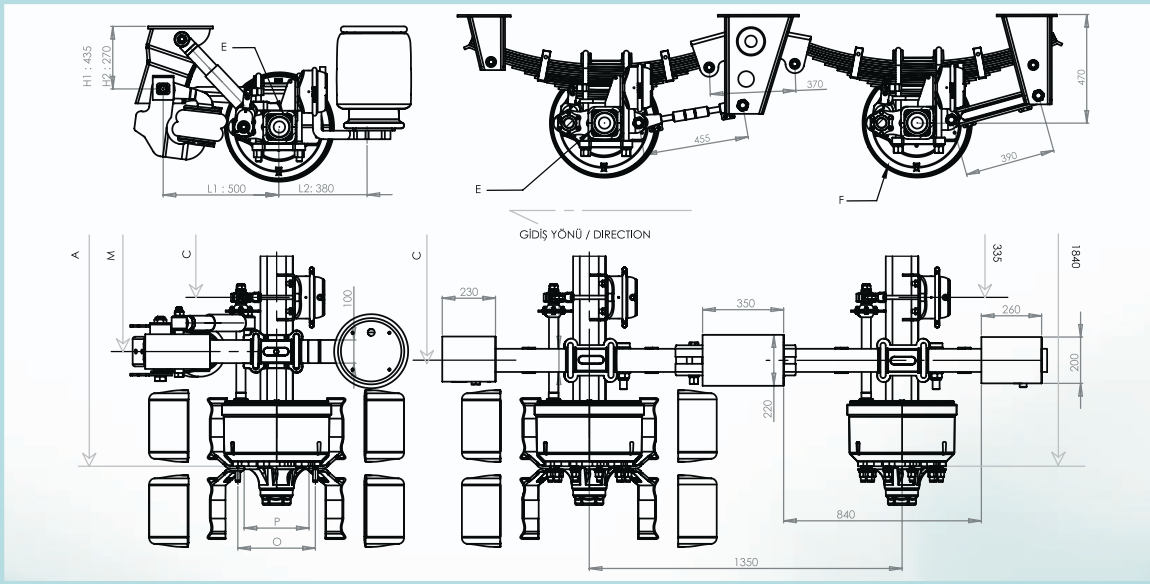
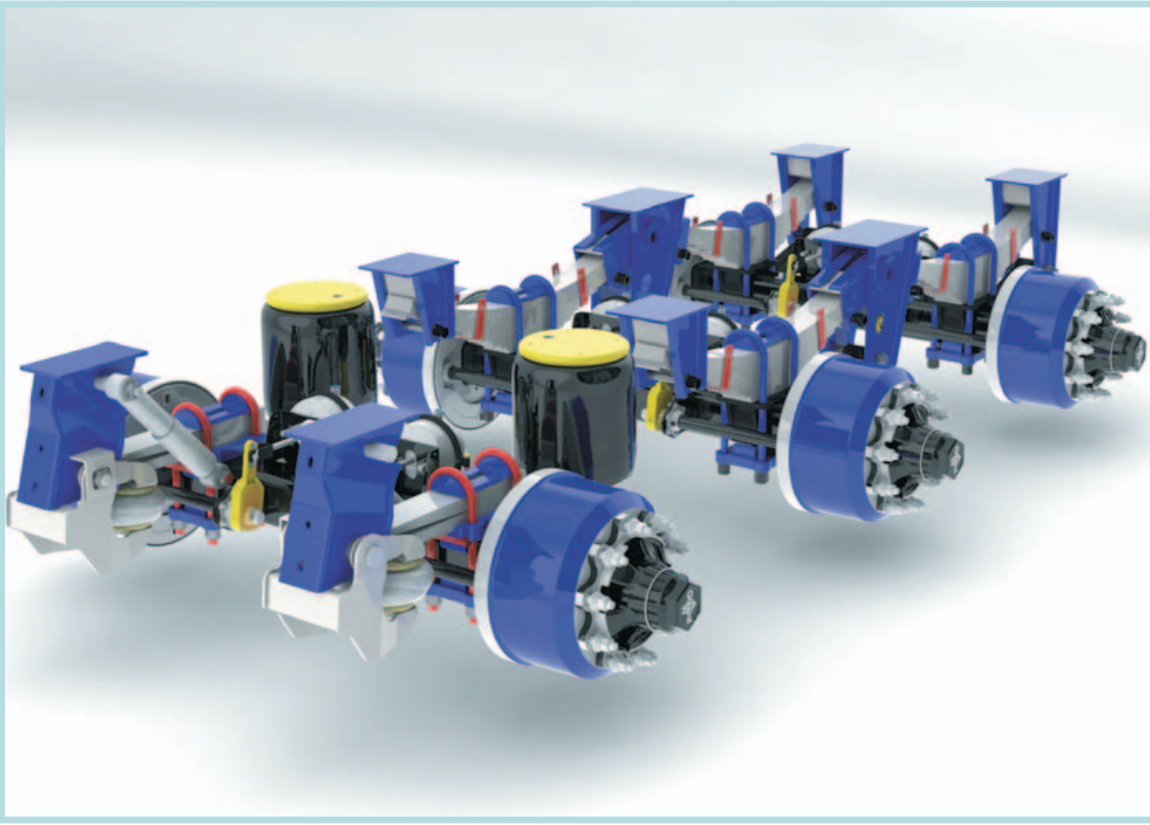
"A" değeri isteğe göre ayarlanabilir / "A" value is adjustable



PARÇA ADI	MONTAJ NO	ADET
ORTA KULAK MONTAJI	1	2
ÖN KULAK	2	2
ARKA KULAK	3	2
MAKAS	4	4
ÜST KEP	5	4
SIKTIRMA	6	8
BUGİ TABLASI	7	4
ALT KEP	8	4
SIKTIRMA SOMUNU	9	16
SABİT BUGİ KOLU	10	1
BUGİ KOLU PERNOSU	11	8
PERNO SOMUNU	12	8
AYARLI BUGİ KOLU	13	3
MAKAS TUTUCU KULAK ÇİVATASI	19	8
SOMUN	20	8

PART NAME	ASSEM.NU.	ITEM
LUG ASSEMBLY	1	2
FRONT LUG	2	2
BACK LUG	3	2
SPRING LEAF	4	4
TOP CAST IRON	5	4
U BOLT	6	8
IRON CAST TABLE	7	4
BOTTOM CAST IRON	8	4
U BOLT NUT	9	16
FIX BRACKET	10	1
BRACKET PIN	11	8
PIN NUT	12	8
CALIBRATED BRACKET	13	3
LUK-SPRING BOLT	19	8
NUT	20	8

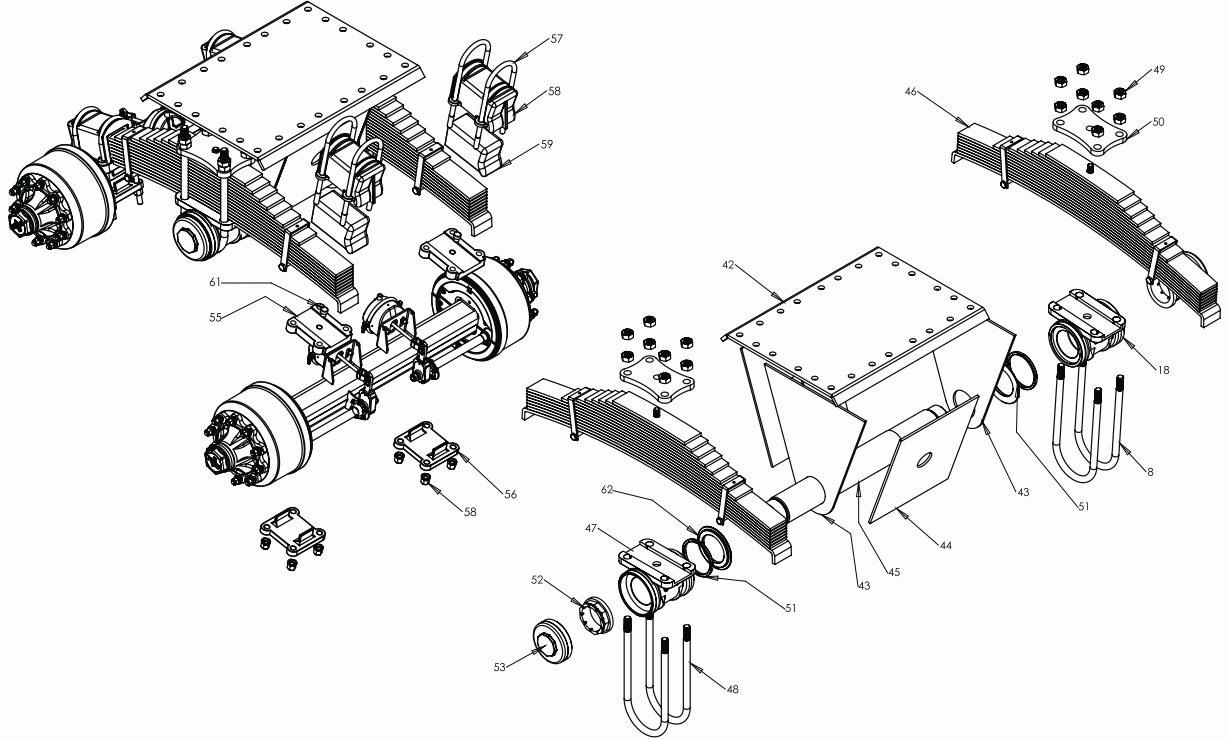




DİNGİL ADI AXLE NAME	KODU CODE	İZ GENİŞLİĞİ (A)	MAKAS MERKEZİ (M)	KÖRÜK MESAFESİ (C)	ARA KOVAN (E)	KAMPA DRUM (F)	BİJON DEMERK. (O)	JANT ÇAPİ (P)	BALATA BRAKE	RULMAN BEARING	AĞIRLIK WEIGHT	DİŞ GENİŞLİK (V)
12 TON MEKANİK SÜSPANSİYON DİNGİL 12 TON MECHANICAL SUSPENSION AXLE	PD-MKL-12	1840	950	335	□140*14	PD-2045	Ø335	Ø280	Ø420*200	33213-218248	2000 kg	2490
14 TON MEKANİK SÜSPANSİYON DİNGİL 14 TON MECHANICAL SUSPENSION AXLE	PD-MKL-14	1840	950	335	□140*14	PD-2045	Ø335	Ø280	Ø420*200	33019-33215	2000 kg	2490
16 TON MEKANİK SÜSPANSİYON DİNGİL 16 TON MECHANICAL SUSPENSION AXLE	PD-MKL-16	1840	950	335	□140*14	PD-2045	Ø335	Ø280	Ø420*200	32314-32222	2130 kg	2490

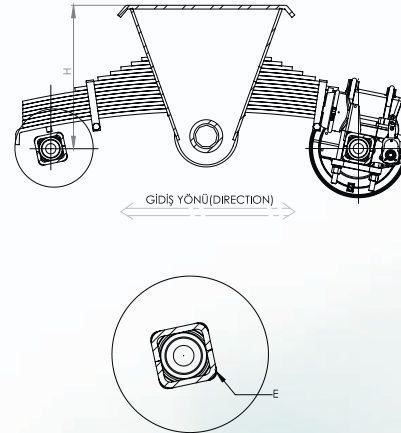
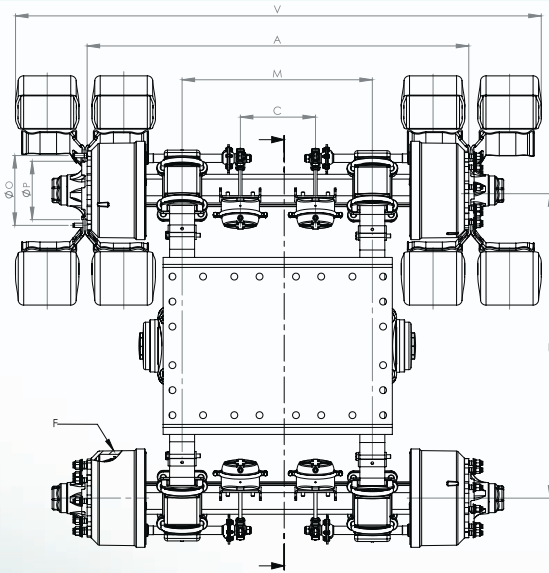
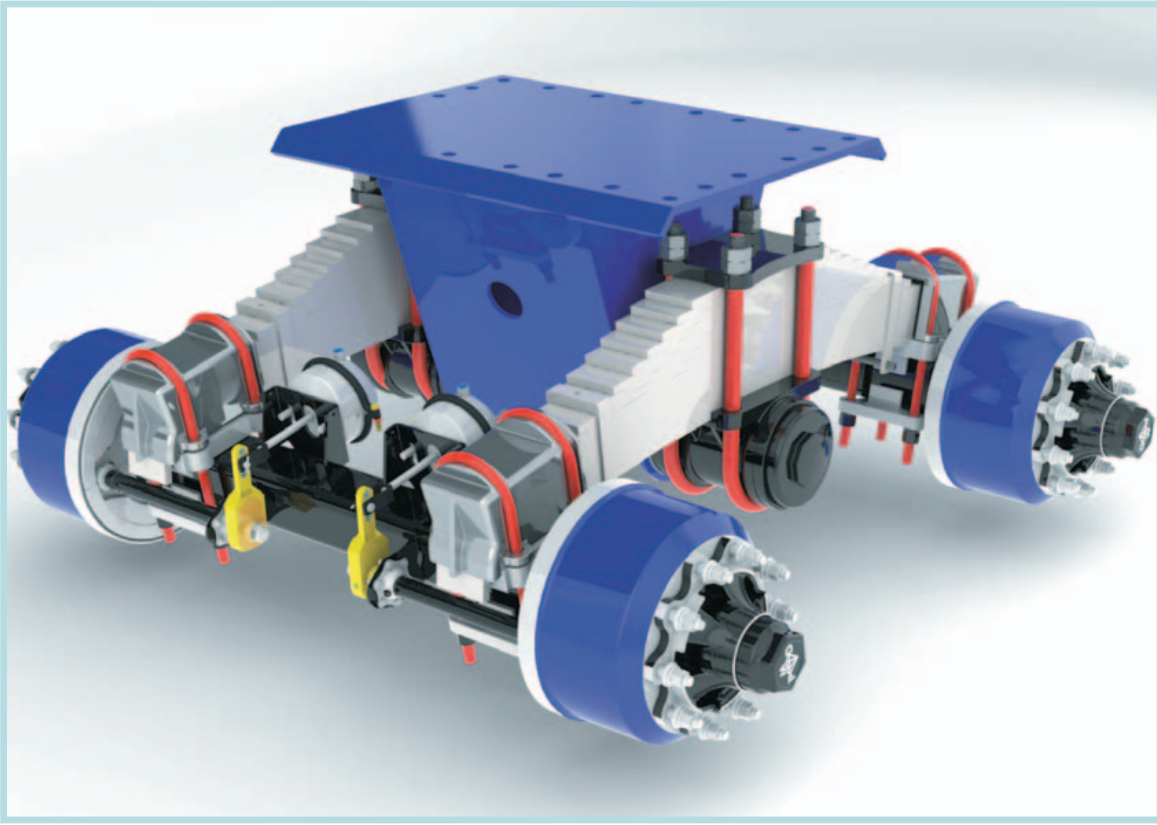
Ölçülendirme mm cinsindendir. / Dimension mm

"A" değeri isteğe göre ayarlanabilir / "A" value is adjustable



PARÇA ADI	MONTAJ NO	ADET
TERS MAKAS MONTAJI	D	
TABLA MONTAJI	E	
ÜST TABLA SACI	42	1
TABLA YAN SACI	43	2
TABLA ÖN-ARKA SACI	44	2
TABLA MİLİ	45	1
MAKAS MONTAJI	F	
MAKAS	46	2
MAKAS YATAĞI	47	2
MAKAS SIKTIRMASI	48	4
SIKTIRMA SOMUNU	49	8
MAKAS ÜST PLATİNE	50	2
KEÇE	51	2
KEÇE YATAĞI	62	2
MİL SOMUNU	52	2
YATAK KAPAĞI	53	2
TERS MAKAS - DİNGİL MONTAJI	54	
DİNGİL - MAKAS KEPİ	55	4
MAKAS ALT KEP	56	4
SIKTIRMA	57	8
SIKTIRMA SOMUNU (M22)	58	16
DİNGİL - MAKAS KAPAMA KEPİ	59	4
KAPAMA KEPİ LASTİĞİ	60	4
PİM	61	4

PART NAME	ASSEM.NU.	ITEM
REVERSE SPRING ASSEMBLY	D	
TABLE ASSEMBLY	E	
TOP TABLE IRON SHEET	42	1
TABLE LEFT - RIGHT IRON SHEET	43	2
TABLE FRONT - BACK IRON SHEET	44	2
TABLE SHAFT	45	1
SPRING ASSEMBLY	F	
SPRING	46	2
SPRING CAST IRON	47	2
SPRING U BOLT	48	4
U BOLT NUT	49	8
SPRING TOP IRON SHEET	50	2
OIL SEAL	51	2
OIL SEAL BEARING	62	2
SHAFT NUT	52	2
CAST IRON COVER	53	2
REVERSE SPRING - AXLE ASSEMBLY	54	
AXLE - SPRING CAST IRON	55	4
SPRING BOTTOM CAST IRON	56	4
U BOLT	57	8
U BOLT NUT (M22)	58	16
AXLE - SPRING CAST IRON	59	4
CAP RUBBER	60	4
PIN	61	4



DİNGİL ADI AXLE NAME	KODU CODE	İZ MESAFESİ (A)	TOZ SACI MESAFESİ (B)	KÖRÜK MESAFESİ (C)	MAKAS MERK. (M)	ARA KOVAN (E)	KAMPANA DRUM (F)	DİNGİL MESAF. (L)	YÜKSEKLİK (H)	BİJON DE.ME. (O)	JANT ÇAPİ (P)	BALATA BRAKE	RULMAN BEARING	AĞIRLIK WEIGHT	DİŞ GEN. (V)
12 TON ÇİFT LASTİK TİRS MAKAS	PD-TM-L12	1840	1280	335	910	140*14	PD-2045	1460	685	Ø335	Ø280	Ø420*200	33313 - 218248	1900 kg	2490
14 TON ÇİFT LASTİK TİRS MAKAS	PD-TM-L14	1840	1280	335	910	140*14	PD-2045	1460	685	Ø335	Ø280	Ø420*200	33019 - 33215	1900 kg	2490
16 TON ÇİFT LASTİK TİRS MAKAS	PD-TM-L16	1840	1270	335	910	140*14	PD-2045	1460	685	Ø335	Ø280	Ø420*220	32222 - 32314	1950 kg	2490

Ölçülendirme mm cinsindendir. / Dimension mm

"A" değeri isteğe göre ayarlanabilir / "A" value is adjustable





DİNGİL | AXLE